

Proceedings

Second Trilateral Symposium on SDGs

- New Strategic Approaches Towards SDGs Beyond the COVID-19 Pandemic -

**August 29-31, 2023
Kagawa University
Kagawa, Japan**

**Organized by
Kagawa University
Chiang Mai University
National Chiayi University**

**Supported by
Kagawa Prefecture
Takamatsu City
Takamatsu Convention and Visitors Bureau**

Edited by: International Office, Kagawa University

Published by Kagawa University
Printed in Japan

For more information on this program and abstracts, please contact the Symposium Secretariat, International Office, Kagawa University, JAPAN
kokusai-h@kagawa-u.ac.jp

Contents

Message from President of Kagawa University	1
Message from the Chiang Mai University President	3
Message from the National Chiayi University President	4
Welcome Address from the Organizing Committee Chair	5
Symposium Coordinators	6
Day 1 Schedule	9
Day 2 Schedule	10
Day 3 Schedule	11
Shuttle Bus Schedule and Map	12
Sustainability & Society Session Schedule	14
Sustainability & Tourism Session Schedule	16
Sustainability & Health Session Schedule	18
Sustainability & Food Session Schedule	21
Sustainability & Technology Session Schedule	24
Student Session Schedule	25
Campus Map	26
Keynote Speech (Hybrid)	28
Keynote Speech: NCYU	Show-Jen Chiou 29
Keynote Speech: CMU	Bannakij Lojanapiwat 30
Keynote Speech: KU	TADA Kuninao 31
Joint Research Session (Hybrid)	32
	Sudarshanee Geekiyanage 33
	Lrong Lim 34
	MIYAZAKI Eiichi 35
	MATSUMOTO Hiroo 36
	HAGA Chiyori 37
	MATSUMOTO Yoshiki 38
Oral Presentations	39
	Kazuya Ishii 42
	Ming-Chung Chen 43
	Ching-Ching Cheng 44
	Sy-Chyi (Kiky) Wang 45
	Pitsanu Rodkomin 46
	Juei-Hsin Wang 47
	Chun-wen Lin 48
	Supitcha Punya 49
	Meng-Lung Lai 50
	Yu-Hsuan Yang 51
	Titaya Sararit 52
	Paul Batten 53
	Tzu-Yu Wang 54
	Hui Hsueh Chen 55
	Kuo-Hung Huang 56
	Yosuke Kakinuma 57
	Pornchai Wisuttisak 58
Sustainability & Society Session (Hybrid)		

	Miwa Nishinaka	60
	Yuthasak Chatkaewnapanon	61
Sustainability & Tourism Session	Shu-yun Chang	62
	Naotaka Hiram	63
	Kansinee Guntawongwan	64
	Yih-ming LIN	65
	Toru Uyama	67
	Sarawut Kumphune	68
	Hsin-I Chang	69
	Chakkrapong Kuensaen	70
	Jyhmirn Lai	71
Sustainability & Health Session (Hybrid)	Kazuyo Kamitori	72
	Chishih Chu	73
	Srithanaviboonchai K	74
	Kannikar Intawong	75
	Katsunori SATO	76
	Abhibhu Kitikamdorn	77
	Nobuyasu KOMASAWA	78
	Hiroshi Suzuki	79
	Kazuya Ichimura	81
	Masashi Sato	82
	Lina Yonekura	83
	Masanori Toyota	84
	Pei-Chuan Hsu	85
	Yuthana Phimolsiripol	86
	Toya Ishii	87
Sustainability & Food Session (Hybrid)	Sirasit Srinuanpan	88
	Hsiao-Wen Wang	89
	Tomohiko Matsuzawa	90
	Kridsada Unban	91
	Ryo C. Yanagita	92
	Ching-Tzu Tseng	93
	Toungporn Uttarotai	94
	Keisuke Mizuta	95
	Supapohn Yamuangmorn	96
	Chiung-Wu Su	98
	Chih-Yi Chiu	99
	Chu-Ti Lin	100
	Chayanon Hansapinyo	101
Sustainability & Technology Session	Sarinthip Thanakkasarnee	102
	Tawee Chaipimonplin	103
	Ukrit Mankong	104
	Shukichi Shimada	105
	Tomoaki Takemura	106
	Takahiro Yamamoto	107
	Mitsuhiro Miyamoto	108

	Sasaki Zeredo Jun	110
	Wareerat Prasitwiset	111
Student Session (Hybrid)	Jou-an Chen	112
	SUGIMURA Sakura and KAWAKAMI Ryo	113
	Rotsukon Jawana	114
	Pin-yi Huang	115
<hr/>		
Poster Session Program and Layout		116
Guidelines for Poster Session 2023		118
<hr/>		
Sustainability & Society Session	Yushan Li	119
	Ting-Yi Li	120
	Fang-Ting Hsieh	121
	Lin Yuchun	122
<hr/>		
Sustainability & Health Session	Kenji Wada	123
	Nang Kham-Kjing	124
	Nourin Jahan	125
	Pimpinan Khammawan	126
	Jennifer Saulam	127
	Putida Pinthonglor	128
	Mohammad Mamun Sikder	129
	Sakaewan Ounjaijean	130
Waraporn Boonchieng	131	
<hr/>		
Sustainability & Technology Session	Jing-Lun Huang	132
	Worawoot Aiduang	133
	Jia-Wei Liang	134
	Natchanon Ratanapun	135
	Chi-Yu Sun	136
<hr/>		
Sustainability & Tourism Session	Arinya Pongwat	137
	Pairach Piboonrunroj	138
<hr/>		
Student Session	Maytika Pattaratanarat	140
	Toshisada Suzuki	141
	Marin Tokumoto	142
	Natjira Noodang	143
	Yoshifumi Sonobe	144
	Koyuki Shinoda	145
	Nuttinee Salee	146
	Yuka Fujisawa	147
	Makito Tomida	148
Sustainability & Food Session	Chatchai Khiewngamdee	149
	Riona Yabumoto	150
	Yamashita Yuri	151
	Ting-Hsuan Huang	152
	Sho HASHIMOTO	153
	Nayu Miyamoto	154
	Xin-Yun Jiang	155
	Akane Hirokawa	156
	Hiromi NAGATA	157
	Panida Boontawee	158
<hr/>		
Dedicated Presentation ; Shimadzu Corporation		
<hr/>		
Sponsor Advertisements		159

Message from President of Kagawa University

On this occasion, Kagawa University is pleased and honored to host the Second Trilateral Symposium on SDGs on-site at our campuses. The sub-theme of "New Strategic Approaches Towards SDGs Beyond the COVID-19 Pandemic" is a manifestation of our desire to work together with our partners, Chiang Mai University and National Chiayi University, to play a leading role in the post-corona era.

Since the beginning of 2020, the world has been exposed to the threat of the new coronavirus infection, and from March 2020, domestic and international travel has been greatly restricted around the world.

In Japan, from May 2023 onwards, the status of coronavirus infectious diseases will be treated the same manner as seasonal influenza, etc., thereby making it possible for people and countries to interact with one another as before. On this occasion, we are very happy to welcome a total of more than 70 people from Chiang Mai University and National Chiayi University to Kagawa to participate in the Second Trilateral Symposium on SDGs in a face-to-face manner.

Since the first joint symposium was held in Chiang Mai in 2007, Kagawa University and Chiang Mai University have conducted seven symposia once every two years until 2018. In 2012, Kagawa University and National Chiayi University held the first joint workshop at Chiayi. The following year, the two partners signed an international academic exchange agreement, and by 2019, Kagawa University and National Chiayi University have successfully conducted seven workshops.

Under these circumstances, the three universities decided to jointly hold a symposium in 2021, which was held online due to the influence of COVID-19. It was a success with over 400 delegates participating.

In the plenary session, President Niwes Nantachit of Chiang Mai University and President Chyung Ay of National Chiayi University participated in the signing of the Memorandum of Cooperation, confirming further strengthening of cooperation among the three universities. As the name of the symposium suggests, the three universities promised to work together to contribute to the SDGs. In that session, I was personally impressed to learn that both Chiang Mai University and National Chiayi University are actively working on the SDGs.

At Kagawa University, we aim to simultaneously work towards the targets of SDGs, which are "international goals for a better world," and the "sustainable regional decentralized society" that Japan must aim for. All the research themes of our staff members are linked to one of the 17 goals of the SDGs, and

we believe that their research output will contribute to the realization of a decentralized society.

The fact that the SDGs are global goals, point to the necessity and importance of working together with partner universities around the world. Along this line, I believe that holding this symposium jointly with Chiang Mai University and National Chiayi University on the theme of SDGs is very timely and significant. I have been informed that since the First Trilateral Symposium, a number of new joint research projects related to the SDGs have been launched.

Immediately after the First Trilateral Symposium, Kagawa University initiated a support project for international joint research involving all three universities in order to accelerate international joint research efforts. This is the third year, and we have provided support to a total of 12 cases. The research results will be presented at this symposium. I hope that these joint projects will continue flourish in the future.

This symposium consists of a main session, along with parallel sessions on Sustainability & Society, Sustainability & Tourism, Sustainability & Health, Sustainability & Food, Sustainability & Technology, Student Session and poster session. Each session will also include facility tours and fieldwork. We hope that delegates will appreciate visiting our research facilities and enjoy the wonderful scenery of Kagawa Prefecture.

Finally, I sincerely hope that this symposium will lead to lively exchanges, which will strengthen our relationship even more than before, and that it will bring about more advancement in the wider world of research and education.



KAKEHI Yoshiyuki, M.D., Ph.D.
President
Kagawa University





Message from the Chiang Mai University President

On behalf of Chiang Mai University, it is our distinct pleasure and honor to be joining the "2nd Trilateral Symposium 2023", the theme of "New Strategic Approaches Towards SDGs Beyond the COVID-19 Pandemic", held from August 29th to 31st.

I would like to emphasize that this symposium not only presents a great opportunity for sustainable academic promotion amongst the three participating universities, but it also serves as a platform to showcase Chiang Mai University's vision and our commitment to being a leading university, dedicated to social responsibility for sustainable development through innovation.

This event holds immense significance as it provides a unique opportunity for students and researchers to showcase their work, by presenting their potential innovations for post-COVID sustainability, with a particular focus on health and food.

The recent pandemic presented humanity with numerous challenges, shaking our sense of security in life, especially in matters of health and nutrition. Each country has approached these insecurities with varied solutions and suggestions, and we are delighted that this symposium offers a stage for all of us to share our experiences and ideas.

Chiang Mai University believes that by sharing our perspectives on new strategic approaches towards Sustainable Development Goals (SDGs) beyond the COVID-19 pandemic, we can raise awareness and encourage conscious adaptation amidst global change and our goal is to ensure that these changes do not compromise the well-being of humanity and the environment we inhabit.

Prof. Pongruk Sribanditmongkol, M.D., Ph.D.

President of Chiang Mai University

The sharing of knowledge and skills by participants in this symposium, I am confident, will bring fresh insights and directions, whilst strengthening our relations and collaborations, as we work together towards building a sustainable future that benefits us all. I look forward to Chiang Mai University participating in this symposium and I wish every participant a most rewarding experience.



Message From The NCYU President

Warm greetings to our distinguished friends from Japan and Thailand. On behalf of National Chiayi University, I would like to thank Kagawa University for its warm welcome and hospitality in hosting the 2023 In-Person The 2nd Trilateral Symposium on SDGs between Kagawa University, Chiang Mai University and National Chiayi University, 29-31 August 2023. It has been a long time since the outbreak of Covid-19 which hindered us from meeting up in person.

National Chiayi University, with 38 delegates from 7 different colleges, including Teachers College, College of Humanities and Arts, College of Management, College of Agriculture, College of Science and Engineering, College of Lifesciences and College of Veterinary Medicine are honored to join this Trilateral Symposium on SDGs 2023. They will present their papers and give oral presentations in 5 vital sessions of SDGs on the topics of Sustainability & Health Session, Sustainability & Society, Sustainability & Technology, Sustainability & Food and Sustainability & Tourism. In addition to that, we also have two students who joined Joint Environmental Cleanup Event last November to share with you their experiences and the findings in this Trilateral Symposium.

I believe that this symposium would be an excellent forum for us to discuss research findings and the possible collaborations in the future. And I would like to take this opportunity to congratulate the success of the 2023 Trilateral Symposium to everyone. We wish that the three universities will have our partnership and cooperation intensively enhanced through this symposium. Thank you.



Han-Chien Lin, Ph.D.
President
National Chiayi University



Welcome Address from the Organizing Committee Chair

On this auspicious occasion, it is with great pleasure and honor for us to welcome such a big delegation from Chiang Mai University and National Chiayi University.

The long friendship between Chiang Mai University (CMU) and Kagawa University (KU) began in 1990 when our two institutions signed the Memorandum of Understanding. KU presently has over 100 partnership agreements with universities around the world. Against this backdrop, we are happy to note that CMU is one of our most important partner universities. Of particular mention is that, since 2005, KU and CMU have been collaborating closely on multi-disciplinary education and research. This collaboration led us to launch the inaugural Joint Symposium in 2007 which was held at CMU. Riding on the momentum, KU hosted the Second Joint Symposium in 2008. Thereafter, seven Joint Symposiums have been conducted on a rotating basis between KU and CMU.

Meanwhile, National Chiayi University (NCYU) and KU signed the Memorandum of Understanding in 2013. This year marks the 10th anniversary of the signing of the MoU. From the perspective of KU, NCYU is also one of our most important partner universities. During this decade, our two institutions have engaged each other in multi-disciplinary international exchanges in research and education. The inaugural Joint Workshop started at NCYU in 2012 and the Second Joint Workshop was held at KU in 2013. Since then, seven Joint Workshops have been held with the two partners taking turns to play host.

Under these circumstances, the three universities decided to pool their respective resources together to jointly hold the First Trilateral Symposium on SDGs. However, due to the corona pandemic, the inaugural symposium was conducted online by KU in 2021. To maintain the momentum and keep the spirits high, KU proceeded to host the Online Research Seminar on SDGs in 2022.

Today, we are very happy to be able to hold the symposium on-site at our campuses. Through actual face-to-face meetings, we hope that all delegates will actively exchange opinions on research, thereby making further contribution to the domain of SDGs. Furthermore, we hope that in the near future, more joint projects will take place, leading to research output that will have positive contribution and impact on society.

Finally, please do not hesitate to consult us should you need any assistance or advice. We shall do our best to help make your stay comfortable and productive. Your time is limited, but we also hope you will enjoy your stay in Kagawa.



Naoyuki Hara, Ph.D.
Vice President, Kagawa University



Session Coordinators:

Chiang Mai University (CMU)

Sustainability & Society Session

CMU Chair: Associate Professor Dr. Pornchai Wisuttisak, Faculty of Law
(Assistant to President)

Sustainability & Tourism Session

CMU Chair: Lect. Dr. Pairach Piboonrungraj, Faculty of Economics
(Assistant to the President)

Sustainability & Health Session

CMU Chair: Associate Professor Kriengkrai Srithanaviboonchai, M.D. M.P.H.,
Research Institute of Health Sciences

Sustainability & Food Session

CMU Chair: Associate Professor Dr. Yuthana Phimolsiripol, Faculty of Agro-
Industry
(Director, Food Innovation and Packaging Center)

Sustainability & Technology Session

CMU Chair: Associate Professor Dr. Ukrit Mankong, PhD.
Photonics and High-Frequency Research Laboratory, Department of Electrical
Engineering, Faculty of Engineering
(Assistant Dean, Faculty of Engineering)

Student Session

CMU Chair: Assistant Professor Dr. Worakanya Buranaphatthana, Faculty of
Dentistry
(Assistant to the President International Relations, International Relations Division)

Session Coordinators:

National Chiayi University (NCYU)

Sustainability & Society Session

Prof. Huang, Kuo-Hung, Faculty of Education

數位學習設計與管理學系暨研究所 黃國鴻 教授

Sustainability & Tourism Session

Prof. Chang Shu-Yun, Department of Marketing and Tourism Management

行銷與觀光管理系 張淑雲 系主任

Prof. Lin, Yih-Ming, Department of Applied Economics

應用經濟學系 林億明 系主任

Sustainability & Health Session

Prof. Chang, Hsin-I, Faculty of Life Science

生化科技學系暨研究所 張心怡 教授

Sustainability & Food Session

Asst. Prof. Wang, Hsiao-Wen, Faculty of Agriculture

園藝學系 王孝雯 助理教授

Sustainability & Technology Session

Prof. Su, Chiung-Wu, Faculty of Science & Engineering

電子物理學系 蘇炯武 教授

Student Session

A.P. Chou, Lan-Szu, Dean of International Affairs

國際長 周蘭嗣 教授

Session Coordinators:

Kagawa University (KU)

Sustainability & Society Session

Prof. TAKAGI Yumiko, Faculty of Education

Sustainability & Tourism Session

Prof. HARA Naoyuki, Faculty of Economics

Prof. FUTATSUYAMA Tatsuro, Faculty of Economics

Sustainability & Health Session

Prof. WADA Kenji, Faculty of Medicine

Assistant Prof. SUZUKI Hiromi, Faculty of Medicine

Sustainability & Food Session

Prof. KAWAMURA Osamu, Faculty of Agriculture

Prof. OGAWA Masahiro, Faculty of Agriculture

Sustainability & Technology Session

Prof. MIKI Nobuhiko, Faculty of Engineering and Design

Student Session

Prof. Long Lim, International Office

Day 1

August 29, Tue.

Saiwai-cho Campus

Time	Item	Notes	Location
Pick up at KAWAROKU HOTEL			
11:00	Registration	For all participants	Olive Square Multipurpose Hall
12:00	Lunch	Meal coupons to be issued to CMU & NCYU delegates.	KU Cafeteria
Main Session			
13:00	Opening	Chair, Vice President, HARA Naoyuki	Center for DRI Education (hybrid)*
13:05	Opening Address: Kagawa Pref.	Governor, IKEDA Toyohito	
13:10	Opening Address:CMU	President, Pongruk Sribanditmongkol	
13:15	Opening Address:NCYU	Representative, by Prof. Show-Jen Chiou Head of the Center for Environmental Protection, Safety and Health	
13:20	Opening Address:KU	President, KAKEHI Yoshiyuki	
13:25	Explanation of the schedule (guidance)		
13:45	Photo Session & Break		
14:15	Keynote: NCYU	Prof. Show-Jen Chiou Head of the Center for Environmental Protection, Safety and Health	Center for DRI Education (hybrid) *
14:45	Keynote: CMU	Prof. Bannakij Lojanapiwat Dean, Faculty of Medicine	
15:15	Break (Coffee & Snack)		Olive Square Café Sorami
15:30-16:30	Poster Sessions**		Library Learning Commons
Main Session			
16:30-18:00	Joint Research Session: 16:30-Sudarshanee Geekiyanage 16:45-Lrong Lim 17:00-MIYAZAKI Eiichi 17:15-MATSUMOTO Hiroo 17:30-HAGA Chiyori 17:45-MATSUMOTO Yoshiki		Center for DRI Education (hybrid) *
Banquet			
18:30-20:30	Opening Remarks: KU Toast: CMU Performance-Student Club "CHIKUYUKAI" Japanese traditional music- Closing Comment: KU		Olive Square Multipurpose Hall
Back to the hotel			

* Hybrid sessions: Remote participants can watch the session through Zoom.

** Posters will be displayed from 12:30 on the 29th until noon on August 31st.

The library is open from 8:30 to 20:00.

Day 2

August 30, Wed.

Various Sites

	Sustainability & Society		Sustainability & Tourism	Sustainability & Health	Sustainability & Food	Sustainability & Technology	Student Session
	Faculty	Students					
	Off-campus	Saiwai-cho campus Off-campus	Saiwai-cho campus Off-campus	Miki-cho Medical campus	Miki-cho Agriculture campus	Hayashi-cho campus	Saiwai-cho campus Off-campus
07:00	Information desk @ the hotel opens						
07:45	7:40 Gather at Takamatsu Ferry Port						
08:00					8 : 00		
08:10				8 : 10	Pick up members at Kawaroku hotel		
08:20		8 : 20	8 : 20	Pick up members at Kawaroku hotel	ARR. 9:00 at Miki-cho Agriculture campus	8 : 20	8 : 20
08:30	Ferry Boat DEP. 8 : 12	Pick up members at Kawaroku hotel	Pick up members at Kawaroku hotel	ARR. 9:00 at Miki-cho Medical campus	ARR. 9:00 at Miki-cho Agriculture campus	Pick up members at Kawaroku hotel	Pick up members at Kawaroku hotel
	Move to the off-campus sites on Nao-shima	Move to Saiwai-cho campus	Move to Saiwai-cho campus		Tour of the Rare Sugar Research Center	ARR. 9:00 at Hayashi-cho campus	Move to Saiwai-cho campus
12:00	Session (hybrid)*	Session 10:30-12:00	Presentation Session 9:00-11:10	Presentation Session (hybrid)*	Lunch	Presentation Session	Presentation Session at the Global Café (hybrid)*
		Lunch	Lunch		Lunch	Lunch	Lunch
12:30	Lunch field-work etc.		Off-campus tourism tour of Shodoshima	Lunch	Presentation Session (hybrid)*		
13:00		Off-campus tour		Lab and hospital tour		On-campus or off-campus tour	Off-campus tour
13:30		Move to Utazu-cho	Field works etc.			Related company visit	Excursion trip to the east area of Kagawa Prefecture
		Shikoku Aquarium Setouchi Museum	ARR. Takamatsu Ferry Port 18 : 35	Move to dinner site 17:00	Banquet at school cafeteria 17 : 25	Dinner	Caviar Fishery Farm, Feeding Yellowtail fish at Adoike Fish Farm
	Dinner	Dinner	Dinner				Tsuda beach Clean
							Dinner
Around 20:30	Back to the hotel	Back to the hotel	Back to the hotel	Back to the hotel	Back to the hotel	Back to the hotel	Back to the hotel

Day 3 August 31, Thu.

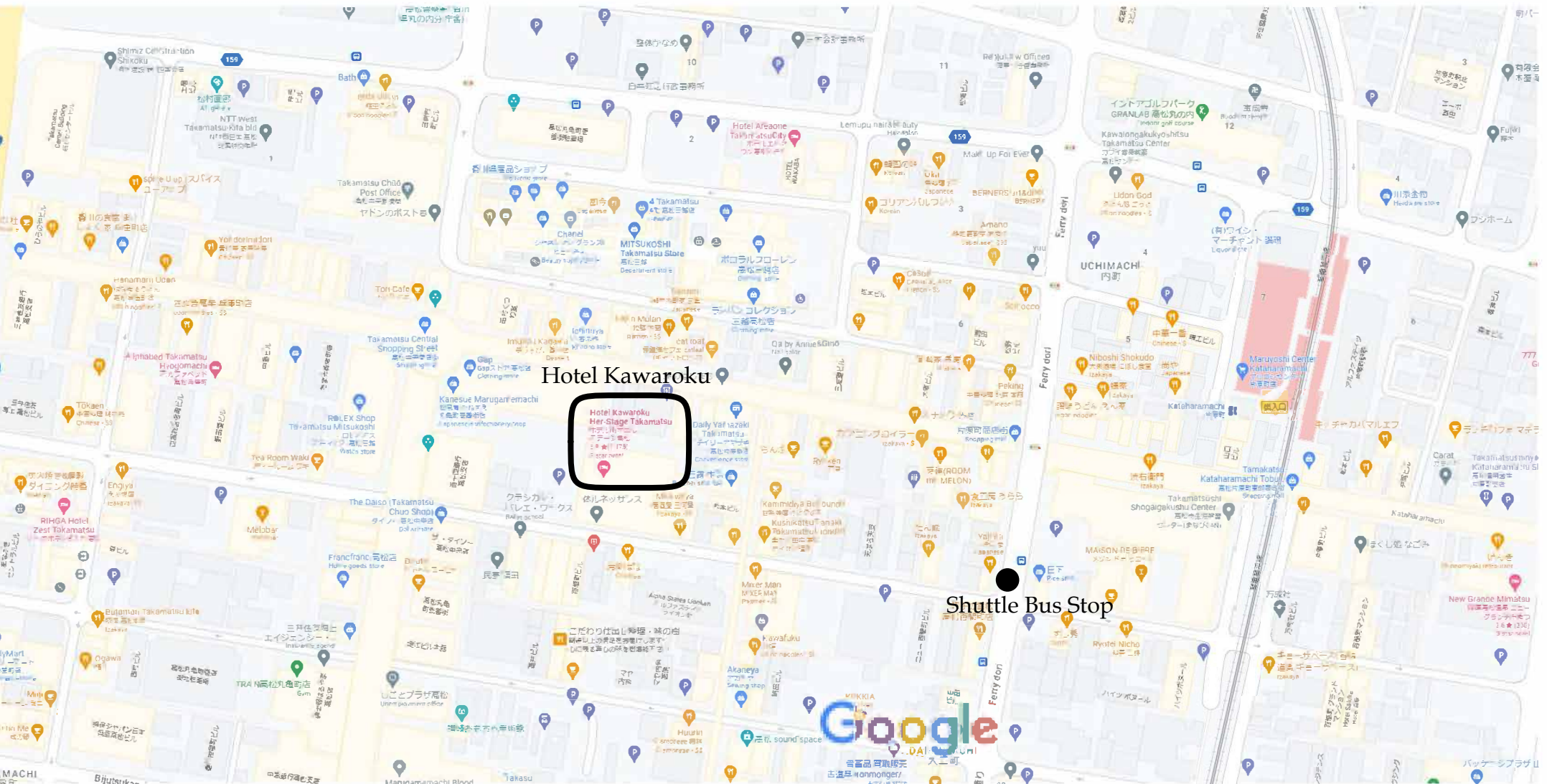
Saiwai-cho Campus

Time	Item	Notes	Location
08:20	Pick up at KAWAROKU HOTEL		
Main Session			
09:00	Housekeeping announcements		Center for DRI Education (hybrid) *
09:10	Keynote: KU side	Prof. TADA Kuninao Director, Seto Inland Sea Regional Research Center	
09:40	Break		
09:50	Lessons Learned from parallel sessions (10 min X 5 or 6) followed by free discussion		Center for DRI Education (hybrid) *
10:50	Break		
11:15	Poster Prize		Center for DRI Education (hybrid) *
11:45	Closing Address Remarks	Vice President, HARA Naoyuki CMU, NCYU	
12:30	Move to the shopping mall Free-choice lunch Shopping		YOUME TOWN Shopping mall
16:30	Depart for airport (TAK19:20-TPE21:05, TAK19:40-HND21:00)		
17:00	Move to KAWAROKU HOTEL for extended stay		
17:30	Depart for airport (TAK20:20-HND21:40)		
It will take 30min from YOUME TOWN to Takamatsu airport by Shuttle Bus.			

Shuttle Bus Schedule

Date	Departure Time	Departure Location	Destination	Applies to
August 29	10:30 am	Shuttle Bus Stop*	Kagawa University	All participants
	20:40 pm	Saiwai-cho northern Campus	Shuttle Bus Stop*	All participants
August 30	07:40 am	Takamatsu Ferry Port	Naoshima	Society S. (only researchers)
	07:50 am	Shuttle Bus Stop*	Shodoshima	Executive S. (President etc.)
	08:00 am	Shuttle Bus Stop*	Miki-cho Campus (Agriculture)	Food Session
	08:10 am	Shuttle Bus Stop*	Miki-cho Campus (Medicine)	Health Session
	08:20 am	Kawaroku Hotel lobby	Hayashi-cho Campus	Technology Session
	08:20 am	Shuttle Bus Stop*	Saiwai-cho northern Campus	Society S. (only students) Tourism Session Student Session
	12:00 pm	Saiwai-cho northern Campus	Shodoshima	Tourism Session
	13:00 pm	Saiwai-cho northern Campus	Utazu-cho	Society S. (only students)
	13:00 pm	Saiwai-cho northern Campus	The east area of Kagawa pref.	Student Session
	13:30 pm	Hayashi-cho Campus	Related company visit	Technology Session
	17:00 pm	Miki-cho Campus (Medicine)	Mikayla (restaurant)	Health Session
	18:30 pm	Kawaroku Hotel lobby	Mikayla (restaurant)	Executive S. (President etc.)
	19:00pm	Miki-cho Campus (Agriculture)	Shuttle Bus Stop*	Food Session
	21:00 pm	Mikayla (restaurant)	Shuttle Bus Stop*	Tourism Session Health Session Executive S. (President etc.)
August 31	08:20 am	Shuttle Bus Stop*	Saiwai-cho Campus	All participants
	12:30 pm	Saiwai-cho Campus	YOUME TOWN shopping mall	All participants
	16:30 pm	YOUME TOWN shopping mall	Takamatsu Airport	Departures
	17:00 pm	YOUME TOWN shopping mall	Shuttle Bus Stop*	Extended stay participants
	17:30 pm	YOUME TOWN shopping mall	Takamatsu Airport	Departures

*For the Shuttle Bus Stop location, please refer to the next page.



Sustainability & Society Session

Day 1; Aug. 29, Tue.

Poster Presentations (15:30-16:30 at Library Learning Commons)

(Posters will be displayed from 12:30 to 18:00.)

Presenters:

Ms. Yushan Li

Ms. Ting-Yi Li

Ms. Fang-Ting Hsieh

Ms. Lin Yuchun

Day 2; Aug. 30, Wed.

07:40 Gather at Takamatsu Ferry port

Oral Presentations

(10 min presentation)

Chair: Prof. Yumiko Takagi (KU) / Prof. Paul Batten (KU)		
10:00-10:10	Prof. Kazuya Ishii The SDGs in the Anthropocene: A Gandhian Critique	KU
10:10-10:20	Prof. Ming-Chung Chen Access the Nature: Project-oriented Approach as A New Strategy in Remote Rural Villages	NCYU
10:20-10:30	Prof. Ching-Ching Cheng Using the Preschool Quality Management Assessment Tool to Promote the Effectiveness of Professional Communities for Preschool Teachers	NCYU
10:30-10:40	Prof. Sy-Chyi (Kiky) Wang Social Innovation Practice: Understanding, Creating, and Changing	NCYU
10:40-10:45	Prof. Pitsanu Rodkomin Learning Management Program for Developing Pre-service Teachers in Elementary Education to be Able to Manage Sustainable Learning in Remote Areas after the COVID-19 Situation	CMU
10:50-11:00	Prof. Juei-Hsin Wang The Case Study of School Leadership and Professional Learning Community in Aboriginal Area	NCYU
11:00-11:10	Prof. Chun-wen Lin Take a Bite of Globalization-What 6th Graders in Taiwan Learned about Global Citizenship	NCYU
11:10-11:20	Prof. Supitcha Punya Young People as Agents of Change: The Mekong School's Approach to Strengthening Young People's Potential for Sustainable Development in the Mekong Subregion	CMU
11:20-11:30	Prof. Meng-Lung Lai Preschoolers' Understanding of Addition-subtraction Inverse Principle: A Cross-cultural Study in Japan and Taiwan	NCYU
11:30-11:40	Ms. Yu-Hsuan Yang Learning Effects of Natural Science on Students With Disabilities Enrolled in General Education Classes	NCYU
11:40-11:50	Prof. Titaya Sararit Residents Indicate Air Pollution's Risk by Using Cultural Landscape Case Study: Doi Suthep Mountain, Northern Thailand.	CMU

11:50-12:00	Prof. Paul Batten A Report on Key Points for Teaching English at Elementary School Selected by Teacher Trainee Students	KU
12:00-12:10	Ms. Tzu-Yu Wang The Systematic Review Results of the Effectiveness of Reading Comprehension Strategy Instruction for Dyslexic Students in Scientific Text Comprehension.	NCYU
12:10-12:20	Ms. Hui Hsueh Chen Teachers' Professional Learning Community: Taking Action for the SDGs	NCYU
12:20-12:30	Prof. Kuo-Hung Huang Service-learning in the Global Context: A Case Study in Indonesia	NCYU
12:30-12:40	Prof. Yosuke Kakinuma Digital Literacy for Sustainable Financial Management: Exploring the Relationship between Financial Literacy, Fintech Adoption, and Quality of Life	CMU
12:40-12:50	Prof. Pornchai Wisuttisak University and Social Impact with SDGs: Case Study of Chiang Mai University Thailand	CMU

Sustainability & Society Session (for Students)

Day 2; Aug. 30, Wed.

08:20 Pick up participants at Kawaroku Hotel
Move to Saiwai-cho North Campus

Oral Presentations (10:30-12:00 in Room No. 811)

12:00-13:00 Lunch

Field Trip

13:00 Depart from Kagawa University
Move to Utazu-cho
Shikoku Aquarium
Utazu Umihotaru Park

Dinner AEON Mall Utazu

21:00 Arrival at Kawaroku Hotel

Sustainability & Tourism Session

Day 1; Aug. 29, Tue.

Poster Presentations (15:30-16:30 at Library Learning Commons)

(Posters will be displayed from 12:30 to 18:00.)

Arinya Pongwat, Boontarika Paphawasit, Khanita Tumphasuwan, Manisa Piuchan
CAMT, CMU

Exploring Wellness Destination Key Success Factors: a Case of Mae Rim District, Chiang Mai Province

Pairach Piboonrungrroj and Benjenop Buranasiri

Faculty of Economics, CMU

Sustainable Tourism Development and Creative Economy: A Case of Creative Lanna Tourism in Chiang Mai

Day 2; Aug. 30, Wed.

8:20 Pick up at Kawaroku Hotel

8:40 Arrival at Saiwai-cho Campus

Oral Presentations (9:00-11:10 at Center for DRI Education, Room No.22)

(10 min presentation + 5 min Q&A, discussions)

9:00 - 9:20	Miwa Nishinaka Graduate School of Management, KU Study on Modeling of Residents' Perceptions and Attitudes Using Sustainable Tourism Indicators in Social Exchange Theory Context: Working Paper	KU
9:20 - 9:40	Yuthasak Chatkaewnapanon Department of Tourism, Faculty of Humanities, CMU Tourism and the Role of Higher Education in Poverty Reduction	CMU
9:40 - 10:00	Shu-yun Chang Department of Marketing of Tourism Management, NCYU Rural Village Creation: A Case Study of Local Creation in Taiping Community	NCYU
10:00 - 10:10	Break	
10:10 - 10:30	Naotaka Hiramami Media and Product Design Course, Faculty of Engineering and Design, KU Community-based Ecotourism Development: An Empirical Analysis of Latin American Cases	KU
10:30 - 10:50	Kansinee Guntawongwan and Akarapong Untong Faculty of Economics, CMU and School of Tourism Development, Maejo University Evaluation of the economic benefits from operating under the green hotel standard: a case study of boutique hotels in Nan Province	CMU
10:50 - 11:10	Wei-hsing KONG and Yih-ming LIN Department of Applied Economics and Management, National Ilan University and Department of Applied Economics, NCYU The Influence of Developing Agritourism on Agricultural Production	NCYU

Field Trip (12:00-18:35)

11:10 - 12:00	Lunch at Kagawa University cafeteria
12:00 - 12:15	Move to Takamatsu Port by Bus
12:45 - 13:45	Move to Shodoshima by Ferry
14:00 - 14:30	Tanada, Rice Fields
15:00 - 15:45	Soy Sauce Factory
16:30 - 17:00	Angel Road
17:30 - 18:35	Move to Takamatsu Port by Ferry
19:00 - 21:00	Dinner at Mikayla at Takamatsu Port

Sustainability & Health Session

Day 1; Aug. 29, Tue.

Poster Presentations (15:30-16:30 at the Library Learning Commons)

(Posters will be displayed from 12:30 to 18:00.)

Prof. Kenji Wada

Special Assistant to the President, KU

Development of Support Iridium Catalysts for the Synthesis of N-Containing Chemicals

Ms. Nang Kham-Kjing

Student, Graduate School of Associated Medical Sciences, CMU

Highly Specific and Rapid Detection of Hepatitis C Virus Using RT-LAMP-Coupled CRISPR-Cas12 Assay: a new diagnostic tool towards SDG 3

Ms. Nourin Jahan

Student, Graduate School of Medicine, KU

Possible Contribution of Phosphate to the Pathogenesis of Chronic Kidney Disease in Dolphins

Ms. Pimpinan Khammawan

Student, Faculty of Public Health, CMU

Heterologous Third and Fourth Dose Vaccines Reduce Severity and Mortality in COVID-19 Patients during Delta and Omicron Predominance: A Cohort Study in Chiang Mai, Thailand

Ms. Jennifer Saulam

Student, Graduate School of Medicine, KU

Temporal Trends in Ischemic Heart Disease and Stroke Mortality Attributable to Metabolic Risk Factors in Japan, Taiwan, and Thailand from 1990 to 2019

Ms. Putida Pinthonglor

Student, Faculty of Dentistry, CMU

Effect of Antimicrobial Peptide LL-37 on Human Bone Marrow Mesenchymal Proliferation

Mr. Mohammad Mamun Sikder

Student, Graduate School of Medicine, KU

PLAAT5 Producing Anandamide and Other *N*-Acylethanolamines in Testis

Dr. Sakaewan Ounjaijean

Lecturer, Research Institute for Health Sciences, CMU

Exploring the Potential of Alternative Medicine: *In Vivo* Study of *Gymnema inodorum* Leaf Extract as a Promising Antimalarial Treatment in *Plasmodium berghei*-infected Mice

Prof. Waraporn Boonchieng

Associate Professor, Faculty of Public Health, CMU

Innovation for Public Health Emergency Response and Community Health Data Management: Case Study COVID-19 in Chiangmai, Thailand

Day 2; Aug 30, Wed.

8:10 Pick up at Kawaroku Hotel

9:00 Arrival at the Medical Campus

Oral Presentations

(10 min presentation + 5 min Q&A, discussions)

9:00-9:15	Opening, housekeeping messages	
Chair: Prof. Srithanaviboonchai K., CMU		
9:15-9:30	Prof. Toru Uyama Associate Professor, Faculty of Medicine, KU Gene Disruption of the Phospholipid-related Enzyme PLAAT1 Improves High-fat Diet-induced Obesity and Hepatic Lipid Accumulation	KU

9:30-9:45	Prof. Sarawut Kumphune Associate Professor, Biomedical Engineering Institute, CMU Novel Effect of Secretary Leukocyte Protease Inhibitor (SLPI) as Surface Coating Agent for Biomedical Applications	CMU
9:45-10:00	Prof. Hsin-I Chang Professor, Head of the Department of Biochemical Sciences and Technology, NCYU Mechanical Stretch Induced Osteogenesis on Human Annulus Fibrosus Cells through Upregulation of BMP-2/6 Heterodimer and Activation of p38 and SMAD1/5/8 Signaling Pathways	NCYU
10:00-10:15	Dr. Chakkrapong Kuensaen Lecturer, International College of Digital Innovation, CMU Cold Atmospheric Pressure Plasma Technology for Health Sustainability: Applications and Prospects	CMU
10:15-10:30	Break	
Chair: Prof. Hsin-I Chang, NCYU		
10:30-10:45	Prof. Jyhmirn Lai Dean of the College of Veterinary Medicine, NCYU Evaluation of the Antibody Titers of Pasteurella Multocida Vaccine for Goats	NCYU
10:45-11:00	Dr. Kazuyo Kamitori Assistant Professor, Faculty of Medicine, KU Structural Basis of Sugar Transport by Sodium-glucose Cotransporters	KU
11:00-11:15	Prof. Chishih Chu Ex-vice President, NCYU. Virulence Plasmid Associated Salmonellosis and their applications	NCYU
11:15-11:30	Prof. Srithanaviboonchai K. Deputy Director, Research Institute for Health Sciences, CMU HIV-1 Recent Infection Surveillance Using a Point-of-Care Test for Recent Infection among Persons Newly Diagnosed with HIV Infection in Thailand	CMU
11:30-13:00	Lunch	
Chair: Dr. Hiromi Suzuki, KU (partly, Prof. Kenji Wada, KU)		
13:00-13:15	Dr. Kannikar Intawong Lecturer, Faculty of Public Health, CMU Effectiveness of Heterologous Third and Fourth Dose COVID-19 Vaccine Schedules for SARS-CoV-2 Infection During Omicron Predominance in Thailand	CMU
13:15-13:30	Prof. Katsunori Sato Associate Professor, Graduate School of Management, KU Employment Transition Support during the Covid-19 Crisis -Questionnaire Survey at Employment Support Facilities in Okayama City	KU
13:30-13:45	Dr. Abhibhu Kitikamdhorn Lecturer, Faculty of Mass Communication, CMU Unraveling the COVID-19 Infodemic on Twitter: A Social Network Analysis in the Context of Thailand	CMU
13:45-14:00	Prof. Nobuyasu Komasa Professor, Faculty of Medicine, KU Attitude Survey toward Career Designing in Japanese Medical Student	KU
14:00-14:15	Dr. Hiromi Suzuki Assistant professor, Faculty of Medicine, KU Problematic Internet Use and Attachment Styles among Adolescents in Japan	KU

14:15-14:30

Break

14:30-15:15

Courtesy visit to Dean (CMU, NCYU members)

15:15-17:00 Lab visit / Hospital visit (CMU, NCYU members, 2 groups)
17:00:- Move to dinner site, Mikayla at Takamatsu Port

Notes to oral presenters

- ✓ All presentations will be delivered hybrid-style. Please use the Windows PC provided.
- ✓ Please bring your presentation PPT file on a USB flash memory drive to the speaker ready room on August 30th before your presentation. We would like to check the operation of your PPT beforehand.
- ✓ Please make sure that the PPT you are using is the latest version.

Sustainability & Food Session

Day 1; Aug. 29, Tue.

Poster Presentations (15:30-16:30 at Library Learning Commons)

(Posters will be displayed from 12:30 to 18:00.)

Refer to Poster Presentations for list of presenters.

Day 2; Aug. 30, Wed.

8:00

Pick up at Kawaroku Hotel by bus.

(If you miss the bus, you may take the train to the Faculty of Agriculture)

8:50

Arrival at Faculty of Agriculture

MC: Dr. Kawamura, O. (KU)

09:00-09:05 **Greetings from Dean** (Dr. Akimitsu, K. KU)

09:05-10:00 **Explanation and tour of the Rare Sugar Research Center**
(Dr. Kato, S. KU)

10:00-10:10 Break

Introduction of each research center (20 min presentation + 4 min discussion)

(One Bell at 18 min, 2 Bells at 20 min, 3 Bells at 24 min)

10:10-10:35 **Genome and Gene Resource Research Center**

Genetic Analysis of Autoimmunity Arising from Disruption of the Defense-Related MAP Kinase Pathway in *Arabidopsis thaliana*. Dr. Ichimura, Kazuya

10:35-11:00 **Advanced Biochemistry and Chemical Biology Center**

Lifespan Extension by the Rare Sugar D-Allulose in the Nematode *Caenorhabditis elegans*. Dr. Sato, Masashi

MC: Dr. Ogawa, M. (KU)

11:00-11:25 **Food Safety and Nutraceutical Science Center**

Table Olive Processing in Japan: Towards Sustainability and Enhanced Health Effects. Dr. Yonekura, Lina

11:25-11:55 **Agricultural Resources and Technology Center**

Greenhouse gas reduction by drip irrigation of rice
Dr. Toyota, Masanori

11:55- Lunch at Kagawa University cafeteria

Research presentations by young researchers

(15 min presentation + 4 min discussion, One Bell at 13 min, 2 Bells at 15 min, 3 Bells at 19 min)

Chair: Asst. Prof. Dr. Wang, Hsiao-Wen (NCYU)		
12:45	Dr. Hsu, Pei-Chuan The influence of social value, work value, and self-efficacy of Veterinary students on the career development of veterinary students at NTU.	NCYU
13:05	Dr. Phimolsiripol, Yuthana Cricket protein-FOS conjugation as a vitamin D3 carrier in food system	CMU
13:25	Dr. Ishii, Toya Soybean lipophilic protein as a sustainable plant-based ingredient for emulsion and foam systems.	KU
13:45	Dr. Srinuanpan, Sirasit Bioprocess Improvement for Fermentation of Pigmented Thai Glutinous Rice-Based Functional Beverage (<i>Sato</i>) with Superior Antioxidant Properties	CMU
14:05	Break	
Chair: Assoc. Prof. Dr. Yuthana Phimolsiripol (CMU)		
14:20	Dr. Wang, Hsiao-Wen Effect of Harvest Maturity and Storage Temperature on the Ripening Quality of Mango (<i>Mangifera indica</i> L.) Fruit	NCYU

14:40	Dr. Matsuzawa, Tomohiko Glycoside hydrolases of Japanese <i>koji</i> mold, <i>Aspergillus oryzae</i>	KU
15:00	Dr. Unban, Kridsada Potential Probiotic Lactic Acid Bacteria Isolated from Indigenous Fermented Tea Leaves (Miang) in North Thailand	CMU
15:20	Dr. Yanagita, Ryo Development of Simplified Analogs of Aplysiatoxin Having Different Conformation-Controlling Units	KU
15:40	Break	
Chair: Prof. Dr. Toyota, Masanori (KU)		
15:55	Dr. Tseng, Ching-Tzu Entomopathogenic Nematode: a Potential Biocontrol Agent in Integrated Pest Management	NCYU
16:15	Dr. Uttarotai, Toungporn Coffee Production and the SDGs: Insights from Soil Microbes on Climate Change Mitigation	CMU
16:35	Dr. Mizuta, Keisuke Effects of agroforestry system on the growth of olive and durum wheat in Japan	KU
16:55	Dr. Yamuangmorn, Supapohn Enhancement of yield and grain zinc accumulation in rice by foliar application with zinc and potassium fertilizer	CMU

MC: Dr. Kawamura (Coordinator, KU)

17:25

Banquet at Kagawa University cafeteria

Greeting from Dr. Akimitsu, Dean of the Faculty of Agriculture (KU)
 Greeting from Dr. Noppol Leksawasdi, Director, Office of Research Administration, Faculty of Agro-Industry (CMU)
 Greeting from Coordinator, Dr. Wang, Hsiao-Wen, Faculty of Agriculture (NCYU)
 Toastmaster, Coordinator, Dr. Yuthana Phimolsiripol, Faculty of Agro-Industry (CMU)

 Networking

 Closing remarks, Coordinator, Dr. Ogawa (Coordinator, KU)

19:00

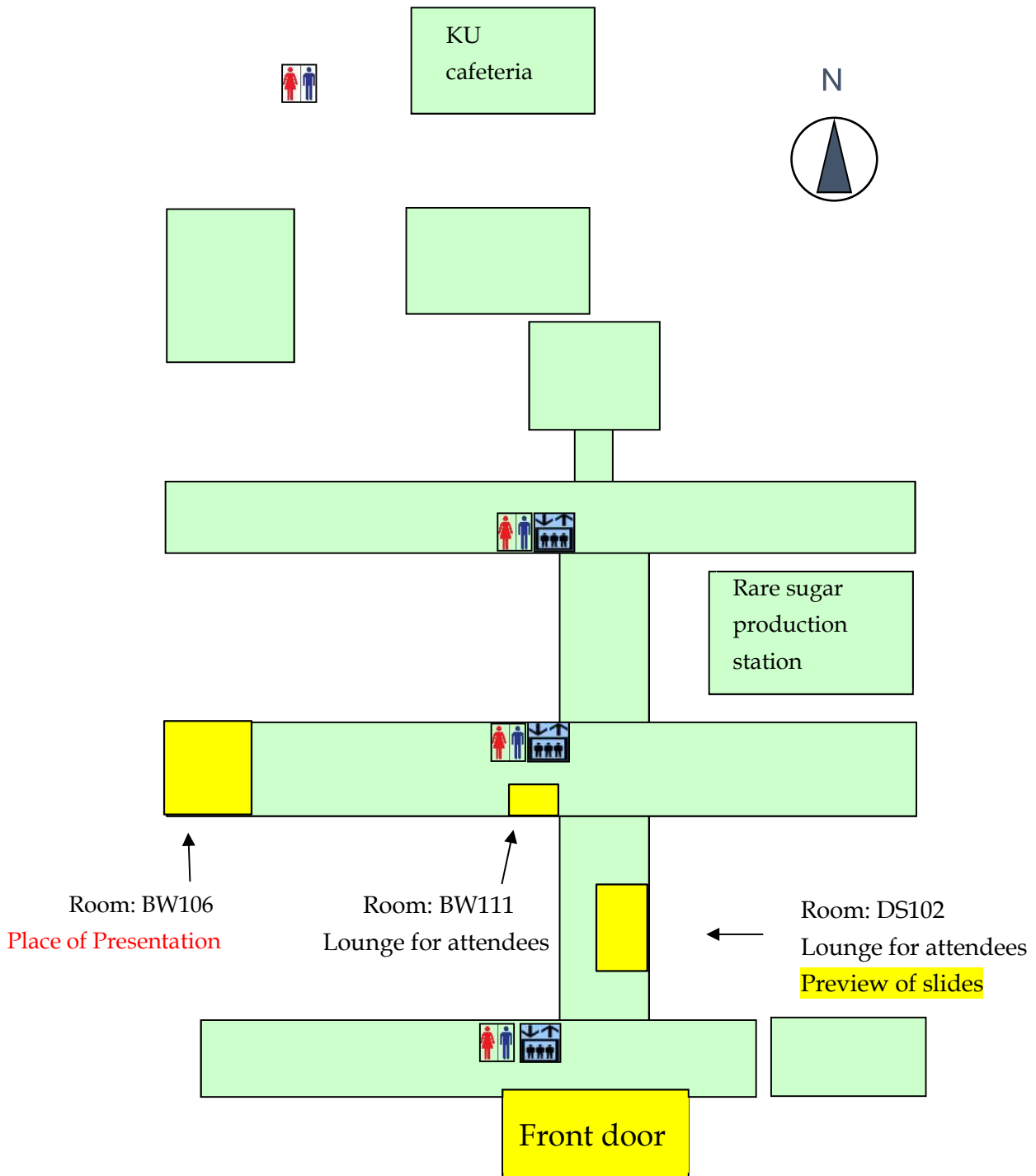
Move to Kawaroku Hotel by Shuttle Bus

Notes to oral presenters

- ✓ All presentations will be delivered hybrid-style. Please use the Windows PC provided.
- ✓ Please bring your presentation PPT file on a USB flash memory drive to room DS102 on August 30th before your presentation. We would like to check the operation of your PPT beforehand.
- ✓ Please make sure that the PPT you are using is the latest version.

Map

Faculty of Agriculture, Kagawa University
2393 Ikenobe, Miki-cho, Kita-gun, Kagawa, 761-0795, Japan



Sustainability & Technology Session

Day 1; Aug. 29, Tue.

Poster Presentations (15:30-16:30 at Library Learning Commons)

(Posters will be displayed from 12:30 to 18:00.)

Refer to Poster Presentations for list of Presenters.

Day 2; Aug 30, Wed.

8:20 Pick up at Kawaroku Hotel

9:00 Arrival at Hayashi-cho Campus

Sustainability & Technology Oral Session (Room 6201)

(10 min presentation + 5 min Q&A, discussions)

9:15-9:20	Opening	
9:30-9:45	Chiung-Wu Su Applications of Magneto-optical Faraday Effect in Solid Interfaces and Liquid Phases	NCYU
9:30-9:45	Chih-Yi Chiu Attention on Your Recommender Systems	NCYU
9:45-10:00	Chu-Ti Lin Evaluating Different Approaches' Effectiveness in Combining Spectrum-based Fault Localization Techniques	NCYU
10:15-10:30	Break	
10:30-10:45	Chayanon Hansapinyo Real Time Structural Health Monitoring of Historic Buildings	CMU
10:45-11:00	Sarinthip Thanakkasarnee Temperature-responsive Nanocomposite Films Using Phase Change Material and Halloysite Nanotubes as a Smart Microwave Packaging Material	CMU
11:00-11:15	Tawee Chaipimonplin Drought Management with Web Application for Chiang Mai Province, Thailand	CMU
11:15-11:30	Ukrit Mankong Development and Evaluation of Photonic Devices and Circuits for Communications and Biosensing Applications	CMU
11:30-11:45	Break	
11:45-12:00	Shukichi Shimada Analysis of Delayed Afterdepolarization in a Mathematical Cardiac Model	KU
12:00-12:15	Tomoaki Takemura Fabrication and Evaluation of Fe Thin Film Line Patterns Embedded in GaAs	KU
12:15-12:30	Takahiro Yamamoto Research on Ventilation Methods for Energy Saving and COVID19 Infection Control in University Facilities	KU
12:30-12:45	Mitsuhiro Miyamoto Evaluation and Mitigation of Seismic Risk for Composite Masonry Buildings in Bhutan	KU

12:45-13:30 Lunch

14:30-15:15 Tour (MITSUI E&S Co., Ltd., AOI ELECTRONICS CO., LTD.)

17:00- Move to dinner site

Student Session

Day 1; Aug. 29, Tue.

Poster Presentations (15:30-16:30 at Library Learning Commons)

(Posters will be displayed from 12:30 to 18:00.)

Maytika Pattaratanarat

CMU

The Influence of Corruption on the Effect of Public Spending on Education Efficiency

Day 2; Aug. 30, Wed.

Oral Presentations (9:00-12:00 at the Global Café)

(10 min presentation + 10 min Q&A, discussions)

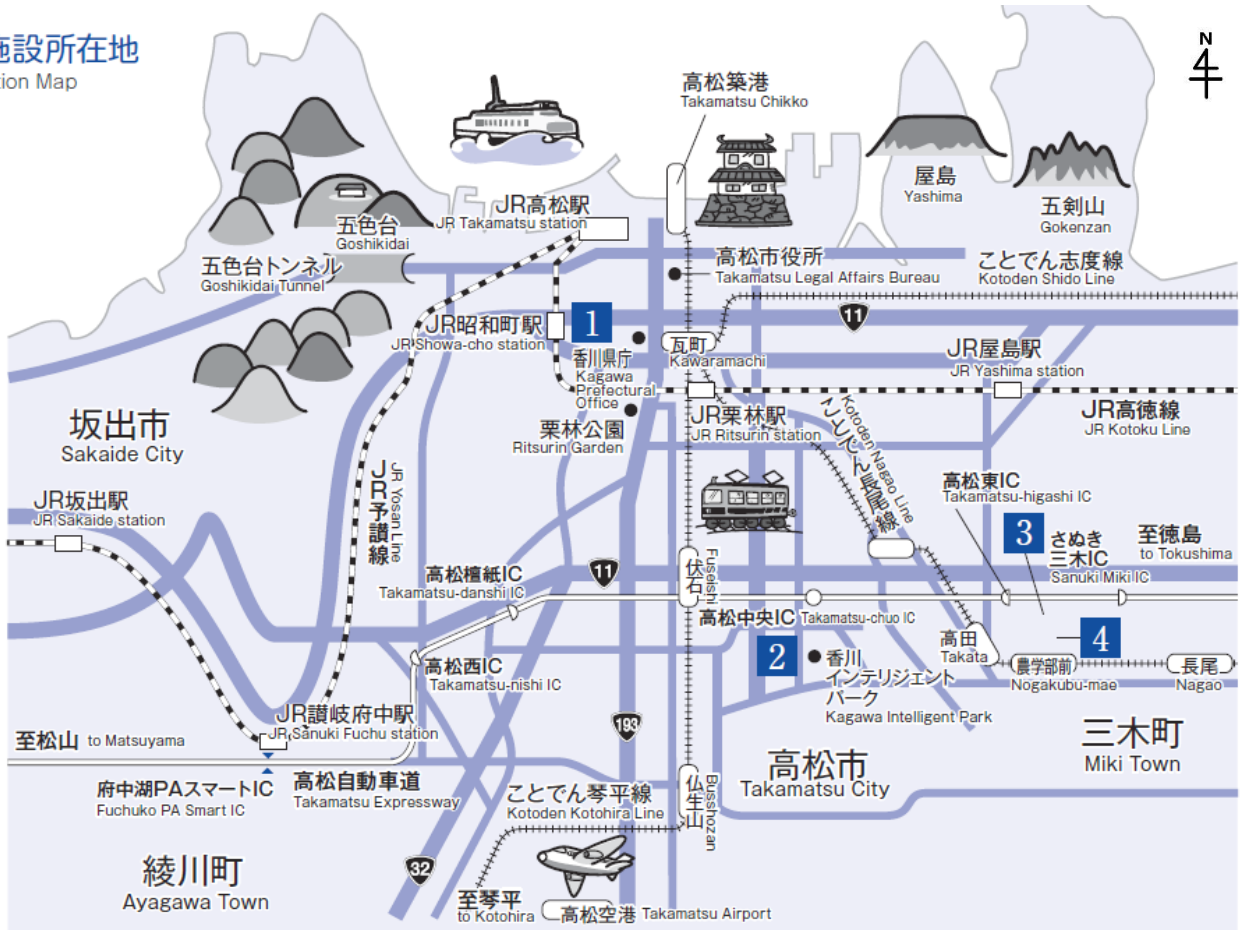
09:00 - 09:20	Sasaki Zeredo Jun Marine Garbage Cleanup Events as a Means of Community Engagement towards Tackling Marine Pollution	KU
09:20 - 09:40	Wareerat Prasitwiset The Genetic Diversity and Maternal Lineage of Marine Mammals and Sea Turtles along the Sea Coasts of Thailand	CMU
09:40 - 10:00	Jou-an Chen Cleaning beach in Aogu Wetlands Forest Park	NCYU
10:00 - 10:20	Break time	
10:20 - 10:40	SUGIMURA Sakura and KAWAKAMI Ryo Marine Garbage Collection and Survey in an Uninhabited Island in Seto Inland Sea: Lessons Learned from an Experience	KU
10:40 - 11:00	Rotsukon Jawana Vacuum Stripping Pretreatment of Chicken Manure for Sustainable Biogas Production	CMU
11:00 - 11:20	Pin-yi Huang Cleaning beach in Aogu Wetlands Forest Park	NCYU

Field Work (13:00-18:00 in eastern Kagawa prefecture)

13:00	Departure from Saiwai-cho Campus
14:00	Caviar Fishery Center
15:00	Yellowtail fish-feeding experience
16:40	Tsuda Beach Cleanup
17:15	Depart from Tsuda Beach
18:00	Dinner at Piccadilly-Ya

Map of Takamatsu

各施設所在地 Location Map



1 Saiwai-cho Campus



[Location \(google map\)](#)



2 Hayashi-cho Campus



[Location \(google map\)](#)



3 Miki-cho Campus (Medicine)



[Location \(google map\)](#)



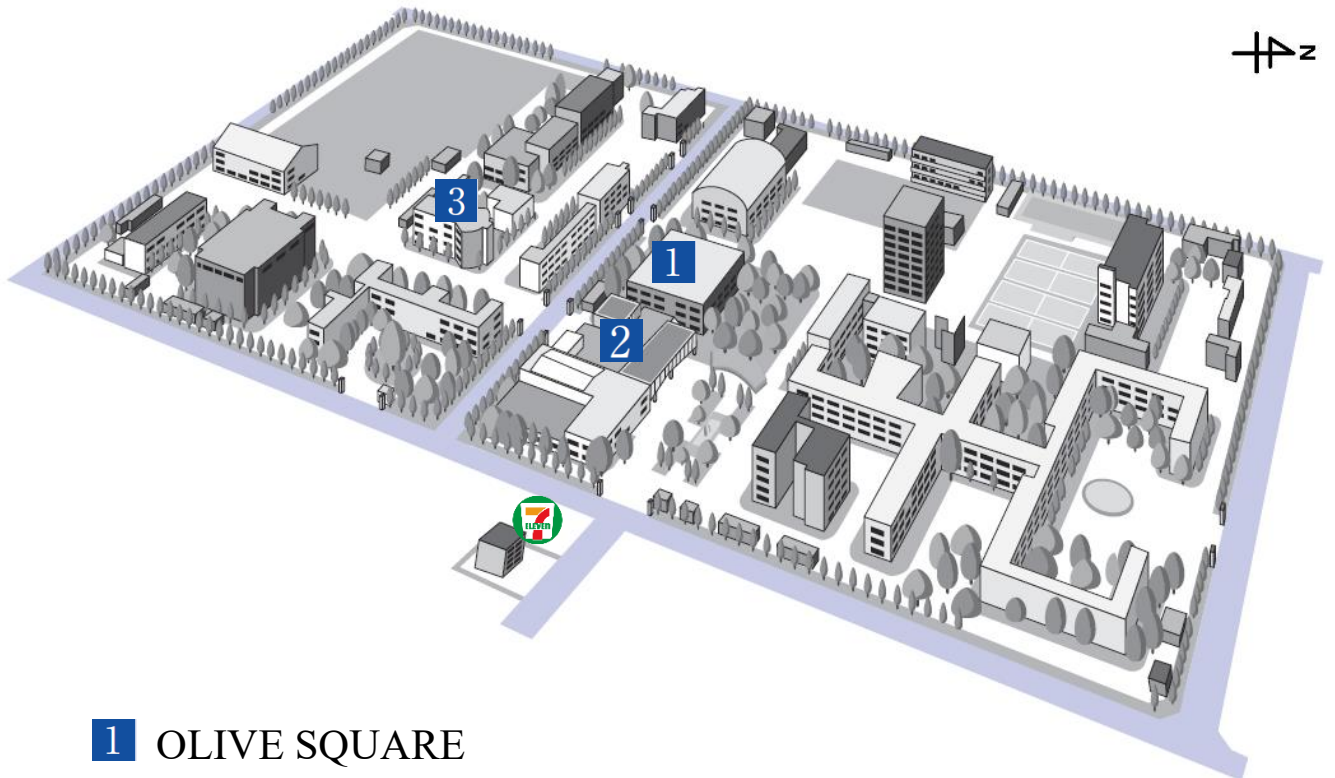
4 Miki-cho Campus (Agriculture)



[Location \(google map\)](#)



Saiwai-cho Campus Map



1 OLIVE SQUARE

- Mutipurpose Hall
- Global Café
- Community Lounge for Teachers and Staff Members



2 UNIVERSITY HALL

- Cafeteria



3 CENTER FOR DRI EDUCATION



Keynote (hybrid)

at the Center for DRI Education (hybrid)

August 29, Tue. 14:15-14:45

Show-Jen Chiou

Professor, Head of the Center for Environmental Protection,
Safety and Health, National Chiayi University

“ Transforming SDGs into Actions:
The Efforts Toward Sustainability at NCYU”

August 29, Tue. 14:45-15:15

Bannakij Lojanapiwat

Professor, Dean, Faculty of Medicine, Chiang Mai University

“Improving Health and Well-being for All:
CMU Medicine Endeavors”

August 31, Thu. 09:10-09:40

TADA Kuninao

Professor, Faculty of Agriculture,
Director, Seto Inland Sea Regional Research Center,
Kagawa University

“Changes in nutrients and their effects on fisheries after the
introduction of land-based nutrient loading regulations in the Seto
Inland Sea since 1973: A review”

Joint Research Session (hybrid)

at the Center for DRI Education

August 29, Tue. 16:30-18:00

16:30-

Sudarshanee Geekiyanage

Professor, Department of Agricultural Biology
Faculty of Agriculture, University of Ruhuna
“Seasonal effect on Sri Lankan traditional rice”

16:45-

Lrong Lim

Professor, International Office,
Director, International Student Center, Kagawa University
“Four-University Joint Online Environmental Cleanup Event ~A Joint venture among Kagawa University, Chiang Mai University, National Chiayi University, and Universiti Brunei Darussalam”

17:00-

MIYAZAKI Eiichi

Professor, Faculty of Education, Kagawa University
“Considerations for ICT Education for Sustainable Development in Japan and Taiwan”

17:15-

MATSUMOTO Hiroo

Professor, Faculty of Education, Kagawa University
“‘Playful’ Approach in Early Childhood Care and Education Settings: Ensuring Quality of Early Childhood Pedagogies”

17:30-

HAGA Chiyori

Professor, Faculty of Medicine, Kagawa University
“Effectiveness of an International E-Educational Program for Nursing Ethics in Public Health; Focusing on Process of Japanese Policy on Hansen’s Disease”

17:45-

MATSUMOTO Yoshiki

Associate Professor, Faculty of Agriculture, Kagawa University
“Through international collaborations, Japan has developed comprehensive guidelines for insect production based on extensive research”

Oral Presentations

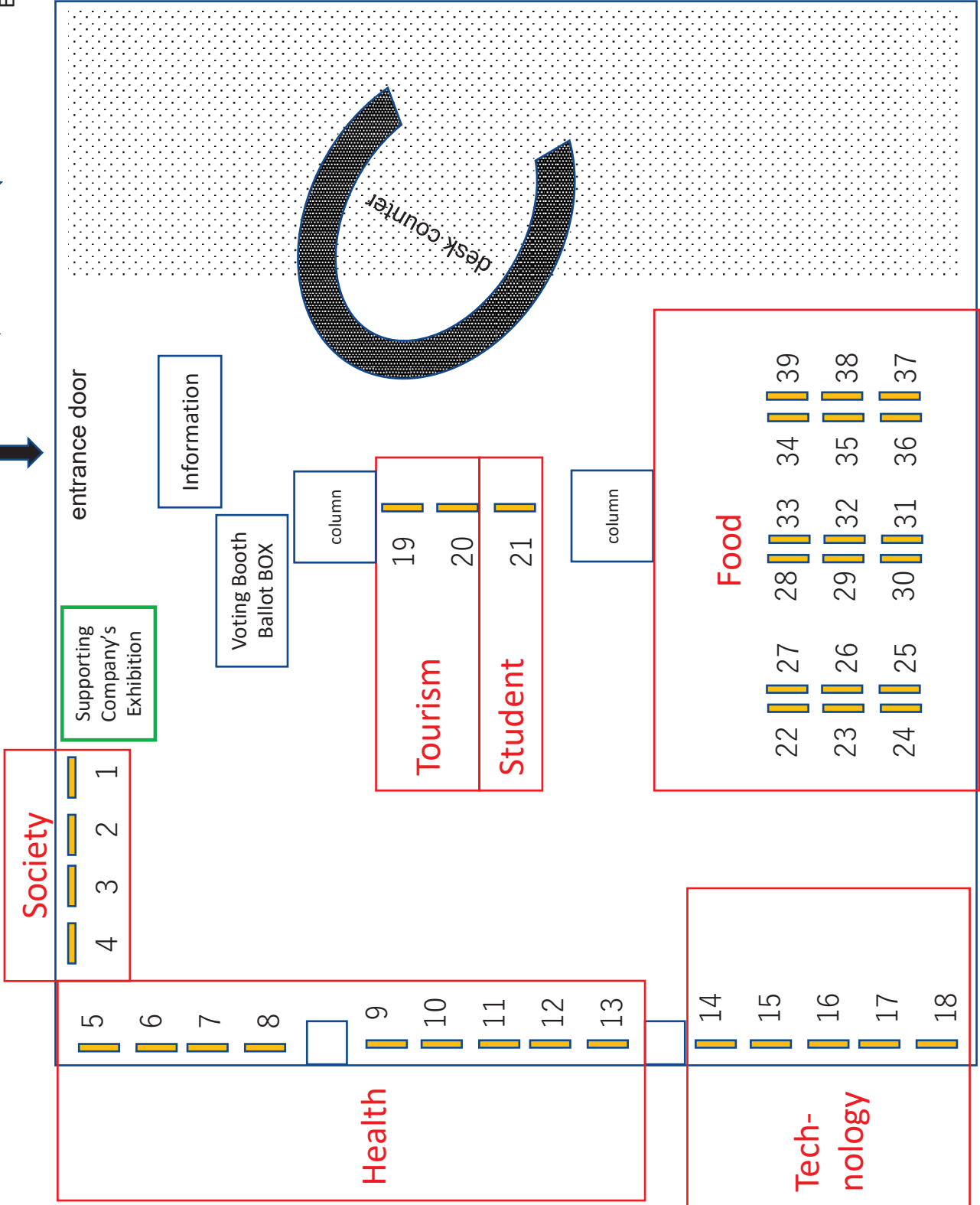
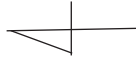
No.	Sessions	Presenter	University	Title
1	Sustainability & Society Session (Hybrid)	Kazuya Ishii	KU	The SDGs in the Anthropocene: A Gandhian Critique
2		Ming-Chung Chen	NCYU	Access the Nature: Project-oriented Approach as A New Strategy in Remote Rural Villages
3		Ching-Ching Cheng	NCYU	Using the Preschool Quality Management Assessment Tool to promote the effectiveness of professional communities for preschool teachers
4		Sy-Chyi (Kiky) Wang	NCYU	Social Innovation Practice: Understanding, Creating, and Changing
5		Pitsanu Rodkomin	CMU	Learning Management Program for Developing Pre-service Teachers in Elementary Education to be able to Manage Sustainable Learning in Remote Areas after the COVID-19 Situation
6		Juei-Hsin Wang	NCYU	The Case study of School Leadership and Professional Learning Community in Aboriginal Area
7		Chun-wen Lin	NCYU	Take a Bite of Globalization-What 6th Graders in Taiwan learned about Global citizenship
8		Supitcha Punya	CMU	Young People as Agents of Change: The Mekong School's Approach to Strengthening Young People's Potential for Sustainable Development in the Mekong Subregion
9		Meng-Lung Lai	NCYU	Preschoolers' understanding of addition-subtraction inverse principle: A cross-cultural study in Japan and Taiwan
10		Yu-Hsuan Yang	NCYU	Learning Effects of Natural Science on Students With Disabilities Enrolled in General Education Classes
11		Titaya Sararit	CMU	Residents indicate Air pollution's Risk by Using Cultural landscape Case Study: Doi Sutep Mountain, Northern Thailand.
12		Paul Batten	KU	A report on key points for teaching English at elementary school selected by teacher trainee students
13		Tzu-Yu Wang	NCYU	The systematic review results of the effectiveness of reading comprehension strategy instruction for dyslexic students in scientific text comprehension.
14		Hui Hsueh Chen	NCYU	Teachers' Professional Learning Community: Taking Action for the SDGs
15		Kuo-Hung Huang	NCYU	Service-learning in the global context: A case study in Indonesia
16		Yosuke Kakinuma	CMU	Digital Literacy for Sustainable Financial Management: Exploring the Relationship between Financial Literacy, Fintech Adoption, and Quality of Life
17		Pornchai Wisuttisak	CMU	University and Social Impact with SDGs: Case study of Chiang Mai University Thailand
1	Sustainability & Tourism Session	Miwa Nishinaka	KU	Study on Modeling of Residents' Perceptions and Attitudes Using Sustainable Tourism Indicators in Social Exchange Theory Context: Working Paper
2		Yuthasak Chatkaewnapanon	CMU	Tourism and the Role of Higher Education in Poverty Reduction
3		Shu-yun Chang	NCYU	Rural Village Creation: A Case Study of Local Creation in Taiping Community
4		Naotaka Hiram	KU	Community-based Ecotourism Development: An Empirical Analysis of Latin American Cases
5		Kansinee Guntawongwan	CMU	Evaluation of the economic benefits from operating under the green hotel standard: a case study of boutique hotels in Nan Province
6		Yih-ming LIN	NCYU	The Influence of Developing Agritourism on Agricultural Production Wei-hsing KONG and Yih-ming LIN
1	Sustainability & Health Session (Hybrid)	Toru Uyama	KU	Gene disruption of the phospholipid-related enzyme PLAAT1 improves high-fat diet-induced obesity and hepatic lipid accumulation
2		Sarawut Kumphune	CMU	Novel effect of Secretory Leukocyte Protease Inhibitor (SLPI) as surface coating agent for biomedical applications
3		Hsin-I Chang	NCYU	Mechanical stretch induced osteogenesis on human annulus fibrosus cells through upregulation of BMP-2/6 heterodimer and activation of p38 and SMAD1/5/8 signaling pathways
4		Chakkrapong Kuensaen	CMU	Cold Atmospheric Pressure Plasma Technology for Health Sustainability: Applications and Prospects
5		Jyhmir Lai	NCYU	Evaluation of the antibody titers of Pasteurella multocida vaccine for goats
6		Kazuyo Kamitori	KU	Structural basis of sugar transport by sodium-glucose cotransporters
7		Chishih Chu	NCYU	Virulence plasmid associated Salmonellosis and their applications
8		Srithanaviboonchai K	CMU	HIV-1 Recent Infection Surveillance Using a Point-of-Care Test for Recent Infection among Persons Newly Diagnosed with HIV Infection in Thailand
9		Kannikar Intawong	CMU	Effectiveness of heterologous third and fourth dose COVID-19 vaccine schedules for SARS-CoV-2 infection during omicron predominance in Thailand
10		Katsunori SATO	KU	Employment Transition Support during the COVID-19 Crisis: Questionnaire Survey at Employment Support Facilities in Okayama City
11		Abhibhu Kitikamdorn	CMU	Unraveling the COVID-19 Infodemic on Twitter: A Social Network Analysis in the Context of Thailand
12		Nobuyasu KOMASAWA	KU	Attitude Survey toward Career Designing in Japanese Medical Students
13		Hiromi Suzuki	KU	Problematic internet use and attachment styles among adolescents in Japan

1	(Interpreter)	Kazuya Ichimura	KU	Genetic Analysis of Autoimmunity Arising from Disruption of the Defense-Related MAP Kinase Pathway in <i>Arabidopsis thaliana</i>
2		Masashi Sato	KU	Lifespan Extension by the Rare Sugar D-Allulose in the Nematode <i>Caenorhabditis elegans</i>
3		Lina Yonekura	KU	Table Olive Processing in Japan: Towards Sustainability and Enhanced Health Effects
4		Masanori Toyota	KU	Greenhouse gas reduction by drip irrigation of rice
1	Sustainability & Food Session (Hybrid)	Pei-Chuan Hsu	NCYU	The influence of social value, work value, and self-efficacy of Veterinary students on the career development of veterinary students at NTU
2		Yuthana Phimolsiripol	CMU	Cricket protein-FOS conjugation as a vitamin D3 carrier in food system
3		Toya Ishii	KU	Soybean lipophilic protein as a sustainable plant-based ingredient for emulsion and foam systems
4		Sirasit Srinuanpan	CMU	Bioprocess Improvement for Fermentation of Pigmented Thai Glutinous Rice-Based Functional Beverage (Sato) with Superior Antioxidant Properties
5		Hsiao-Wen Wang	NCYU	Effects of Harvest Maturity and Storage Temperature on the Ripening Quality of Mango (<i>Mangifera indica</i> L.) Fruit
6		Tomohiko Matsuzawa	KU	Glycoside hydrolases of Japanese koji mold, <i>Aspergillus oryzae</i>
7		Kridsada Unban	CMU	Potential Probiotic Lactic Acid Bacteria Isolated from Indigenous Fermented Tea Leaves (Miang) in North Thailand
8		Ryo C. Yanagita	KU	Development of Simplified Analogs of Aplysiatoxin Having Different Conformation-Controlling Units
9		Ching-Tzu Tseng	NCYU	Entomopathogenic Nematode: a Potential Biocontrol Agent in Integrated Pest Management
10		Toungporn Uttarotai	CMU	Coffee Production and the SDGs: Insights from Soil Microbes on Climate Change Mitigation
11		Keisuke Mizuta	KU	Effects of agroforestry system on the growth of olive and durum wheat in Japan
12		Supapohn Yamuangmorn	CMU	Enhancement of yield and grain zinc accumulation in rice by foliar application with zinc and potassium fertilizer
1	Sustainability & Technology Session	Chiung-Wu Su	NCYU	Applications of Magneto-optical Faraday Effect in Solid Interfaces and Liquid Phases
2		Chih-Yi Chiu	NCYU	Attention on Global-Local Representations in Recommender Systems
3		Chu-Ti Lin	NCYU	Evaluating Different Approaches' Effectiveness in Combining Spectrum-based Fault Localization Techniques
4		Chayanon Hansapinyo	CMU	Real Time Structural Health Monitoring of Historic Buildings
5		Sarinthip Thanakkasaranee	CMU	Temperature-responsive nanocomposite films using phase change material and halloysite nanotubes as a smart microwave packaging material
6		Tawe Chaipimonplin	CMU	Drought Management with Web Application for Chiang Mai Province, Thailand
7		Ukrit Mankong	CMU	Development and evaluation of photonic devices and circuits for communications and biosensing applications
8		Shukichi Shimada	KU	Analysis of delayed afterdepolarization in a mathematical cardiac model
9		Tomoaki Takemura	KU	Fabrication and evaluation of Fe thin film line patterns embedded in GaAs
10		Takahiro Yamamoto	KU	Research on Ventilation Methods for Energy Saving and COVID19 Infection Control in University Facilities
11		Mitsuhiro Miyamoto	KU	Evaluation and Mitigation of Seismic Risk for Composite Masonry Buildings in Bhutan
1	Student Session (Hybrid)	Sasaki Zeredo Jun	KU	Marine Garbage Cleanup Events as a Means of Community Engagement towards Tackling Marine Pollution
2		Wareerat Prasitwiset	CMU	The Genetic Diversity and Maternal Lineage of Marine Mammals and Sea Turtles along the sea coasts of Thailand
3		Jou-an Chen	NCYU	Cleaning beach in Aogu Wetlands Forest Park
4		SUGIMURA Sakura and KAWAKAMI Ryo	KU	Marine garbage collection and survey in an uninhabited island in Seto Inland Sea: lessons learned from an experience
5		Rotsukon Jawana	CMU	Vacuum Stripping Pretreatment of Chicken Manure for Sustainable Biogas Production
6		Pin-yi Huang	NCYU	Cleaning beach in Aogu Wetlands Forest Park

Poster Session

No.	Sessions	Presenter	University	Title
1	Sustainability & Society Session	Yushan Li	NCYU	Exploration of High School Students' Sustainability Awareness and Social Responsibility cultivated by Club Activities: Taking the Alishan Youth Ambassador Club of Jhuci High School in Chiayi County as an Example
2		Ting-Yi Li	NCYU	Study on Walking Exercise at Different Slopes for Elderly Individuals
3		Fang-Ting Hsieh	NCYU	Investigating the Effects of Hydraulic Resistance Training on Functional Fitness in Older Adults
4		Lin Yuchun	NCYU	Effects of Nordic Walking on the Elderly
5	Sustainability & Health Session	Kenji Wada	KU	Development of Support Iridium Catalysts for the Synthesis of N-Containing Chemicals
6		Nang Kham-Kjing	CMU	Highly Specific and Rapid Detection of Hepatitis C Virus Using RT-LAMP-Coupled CRISPR-Cas12 Assay: a new diagnostic tool towards SDG 3
7		Nourin Jahan	KU	Possible contribution of phosphate to the pathogenesis of chronic kidney disease in dolphins
8		Pimpinan Khammawan	CMU	Heterologous third and fourth dose vaccines reduce severity and mortality in COVID-19 patients during delta and omicron predominance: A cohort study in Chiang Mai, Thailand
9		Jennifer Saulam	KU	Temporal trends in ischemic heart disease and stroke mortality attributable to metabolic risk factors in Japan, Taiwan, and Thailand from 1990 to 2019
10		Putida Pinthonglor	CMU	Effect of Antimicrobial Peptide LL-37 on Human Bone Marrow Mesenchymal Proliferation
11		Mohammad Mamun Sikder	KU	PLAAT5 Producing Anandamide and Other <i>N</i> -Acylethanolamines in Testis
12		Sakaewan Ounjaijean	CMU	Exploring the Potential of Alternative Medicine: <i>In Vivo</i> Study of <i>Gymnema inodorum</i> Leaf Extract as a Promising Antimalarial Treatment in <i>Plasmodium berghei</i> -infected Mice
13		Waraporn Boonchieng	CMU	Innovation for Public Health Emergency Response and Community Health Data Management: Case Study COVID-19 in Chiangmai, Thailand
14	Sustainability & Technology Session	Jing-Lun Huang	NCYU	Interface Magneto-optical Faraday Effect for N^+ and CF_4^+ Plasma Treatment Co on Sapphires
15		Worawoot Aiduang	CMU	Potential applications of mushroom mycelia to produce high-value added products in the biomaterials and food industries for future sustainability
16		Jia-Wei Liang	NCYU	MFFPN: an Anchor-Free Method for Patent Drawing Object Detection
17		Natchanon Ratanapun	CMU	Lipid-coated Nanoparticles as a Promising Vehicle for Zeolitic Imidazolate Frameworks-8 (ZIF-8)
18		Chi-Yu Sun	NCYU	A Reinforcement Learning-based Software Fault Localization Technique in Continuous Integration
19	Sustainability & Tourism Session	Arinya Pongwat	CMU	Exploring Wellness Destination Key Success Factors: a Case of Mae Rim District, Chiang Mai Province
20		Pairach Piboonrunroj	CMU	Sustainable Tourism Development and Creative Economy: A Case of Creative Lanna Tourism in Chiang Mai
21	Student Session	Maytika Pattaratanarat	CMU	The Influence of Corruption on the Effect of Public Spending on Education Efficiency
22	Sustainability & Food Session	Toshisada Suzuki	KU	α -Glucosidase inhibitory activity of Kumis kucing (<i>Orthosiphon aristatus</i>) and tree marigold (<i>Tithonia diversifolia</i>)
23		Marin Tokumoto	KU	D-Mannose production using D-xylose isomerase and D-mannose isomerase from <i>Priestia megaterium</i> M3.
24		Natjira Noodang	CMU	Factors Affecting Conversion from Monocropping to Environmental Friendly Farming of Hmong Farmer at Si Khiri Rak Village, Wang Chao District, Tak Province
25		Yoshifumi Sonobe	KU	Effect of pH on the dispersion stability of O/W emulsions homogenized in protein solution
26		Koyuki Shinoda	KU	Characterization of L-fucose isomerase from <i>Escherichia</i> sp. BF3da and its application to D-altrose production
27		Nuttinee Salee	CMU	Application of pulse electric field-assisted extraction for green tea extraction and synergism effect with black rice extract on anti-aging properties
28		Yuka Fujisawa	KU	Interconversion between Rare Sugars; Equilibria of Sorbose to Idose or Gulose
29		Makito Tomida	KU	Researching the effect of feeding insects to chickens on muscle growth using FTIR spectroscopy.
30		Chatchai Khiewngamdee	CMU	Quinoa and Sustainability of Food in Thailand
31		Riona Yabumoto	KU	Production of glucosyltagatose with cyclodextrin glucanotransferase
32		Yamashita Yuri	KU	Establishment of a new re-staining method on the duodenum for the domestication of large rodent grasscutters
33		Ting-Hsuan Huang	NCYU	Breeding of ethyl methanesulfonate mutagenesis in periwinkle (<i>Catharanthus roseus</i>)
34		Sho HASHIMOTO	KU	Understanding how absolute humidity affects ectoparasite mite behaviours is crucial for increasing the i-Trap II capture
35		Nayu Miyamoto	KU	Study on method of oxidation and reduction for rare sugar production and its application for D-allosyl D-fructose production
36		Xin-Yun Jiang	NCYU	An Export Capability Evaluation for the New Mango (<i>Mangifera indica</i> L.) Cultivars Quarantined by Vapor Heat Treatment
37		Akane Hirokawa	KU	How can one responsibly and safely utilise by-products as valorised insect feed?
38		Hiroimi NAGATA	KU	The Challenges of Ensuring Insect Welfare in One Health and One Welfare Practice in Insect Production.
39		Panida Boontawee	CMU	<i>In Silico</i> Drug Discovery of Inhibitors Targeting Main Proteases of SARS-CoV-2 and Mutated Variants as a Potential Treatment for COVID-19

Library Learning Commons



Guidelines for Poster Session 2023

Posting posters

- Please go to the reception at Olive Square Multipurpose Hall for registration from 11:00 to 12:00 on August 29th (Tue.)
- After registration, please go to the venue “Library Learning Commons” to post your poster at the designated area by 12:30 on the same day.

Removing posters

- Please collect your poster at noon August 31st (Thu.)

Poster Sessions: poster presentation, voting, and prizes

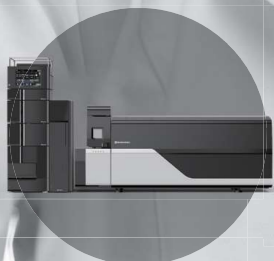
Venue: Library Learning Commons at Saiwai-cho Campus

Posters displayed	Aug. 29th (Tue.) 12:30 to Aug. 31st (Thu.) 12:00
Poster presentations:	<p>Aug. 29th (Tue.), 15:30-16:30</p> <p>Odd numbers: 15:30-16:00 Even numbers: 16:00-16:30</p> <p>Presenters will make presentations next to their posters during the designated time.</p>
Voting	<p>Aug. 29th (Tue.), 15:30 to 18:00; Aug. 30th (Wed.), 8:30 to 13:00 (end of voting)</p> <p>※Please note that the participants in Society, Health, Food and Technology Sessions need to vote on Aug. 29th (Tue.) as the venue for Aug. 30th is away from the main campus.</p> <p>※Ballots will be given at the venue for the Poster Sessions.</p> <p>※Please beware that we will not accept any late ballots.</p> <p>Eligibility: Participating academic staff and researchers: 3 votes; Registered university staff: 3 votes; Participating students: 1 vote</p>
Collection of posters	August 31st (Thu.), 12:00

“Best Poster Presentation” prizes will be awarded based on the results of voting (one person for each prize).

- First Prize: President Award
- Second Prize: Trustee Award
- Third Prize: Vice President, International Office Director Award
- The most voted student poster: International Student Center Director Award (excluding the three award-winners above).

安心と安全を届けたい



Liquid Chromatograph
Mass Spectrometry



Gas Chromatograph
Mass Spectrometry



Imaging Mass
Microscope

Shimadzu Technology - Contributing to Food Safety

Food industry is the largest industry of the global economy and it includes various sectors such as agriculture, manufacturing, production, processing, R&D, retail and more. It has global impacts and influences various other industry. Food is an essential part of our lives. With the current developments in the food industry, the demand, availability, access and trends of food have evolved to better cater to our needs and wants globally. Above all, the safety and quality of food is key to provide the world with food that is safe and nutritious.

Reference only
Specifications only in Japan
Made in Japan



Anytime, Anywhere
Small and Smart Mobile Fetal Monitor

Fetal Monitor
iCTG

Supervised by Prof. Kazuhiro HARA



We are seeking
DISTRIBUTOR



Melody International

地域の発展と豊かな環境を目指し、我々は進化します。

KAKEN-TECHNO CO., LTD.

化研テクノ株式会社

<http://kaken-techno.co.jp>

- | | | |
|--------|-----------|--|
| 本社 | 〒770-0873 | 徳島県徳島市東沖洲2丁目27番地1
TEL (088)664-6321(代表) |
| 高松営業所 | 〒761-0301 | 香川県高松市林町148-19
TEL (087)815-1111(代表) |
| 松山営業所 | 〒791-1102 | 愛媛県松山市来住町1445番1
TEL (089)960-0260(代表) |
| 新居浜営業所 | 〒792-0050 | 愛媛県新居浜市萩生545-3
TEL (0897)43-8001(代表) |
| 高知営業所 | 〒780-0082 | 高知県高知市南川添21-13
TEL (088)884-8881(代表) |
| 岡山出張所 | 〒700-0927 | 岡山県岡山市北区西古松1丁目6-3
TEL (086)250-3959(代表) |
| 今治出張所 | 〒794-0054 | 愛媛県今治市北日吉町1丁目3番1号-105
TEL (0898)35-3152(代表) |
| 大阪出張所 | 〒564-0062 | 大阪府吹田市垂水町3丁目13番18号
TEL 06-4861-0018 (代表) |

取扱品目

試験研究用試薬、一般試薬
輸入試薬、体外診断薬
試験研究用精密分析機器
実験器具及び機材
臨床検査機器
高純度化成品、工業薬品
水産薬品、水処理薬品
医薬品、動物用医薬品



ISO9001 品質マネジメントシステム認証取得
ISO14001 環境マネジメントシステム認証取得

認証範囲：ISO9001 本社、松山営業所
ISO14001 本社、高松営業所、松山営業所



TAKAMATSU TEISAN supports your daily life.

TAKAMATSU TEISAN is a specialist of gas

Here are some examples of where gas is used

Carbonated beverages and dry ice

・炭酸ガスCO₂

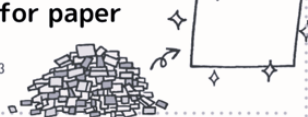


Inflating balloons

・ヘリウムガスHe

Bleaching of wood, the raw material for paper

・オゾンガスO₃



Medical gases

・酸素ガスO₂

Supporting hospital and home care with oxygen gas, which is essential for treatment.



Gas for preserving snack

・窒素ガスN₂



Fuel gas for fuel cell vehicles

・水素ガスH₂

Steel Cutting & Welding

・酸素ガスO₂、炭酸ガスCO₂、アルゴンガスAr

I am a frog born of hydrogen

Let's study together about the future of the earth.



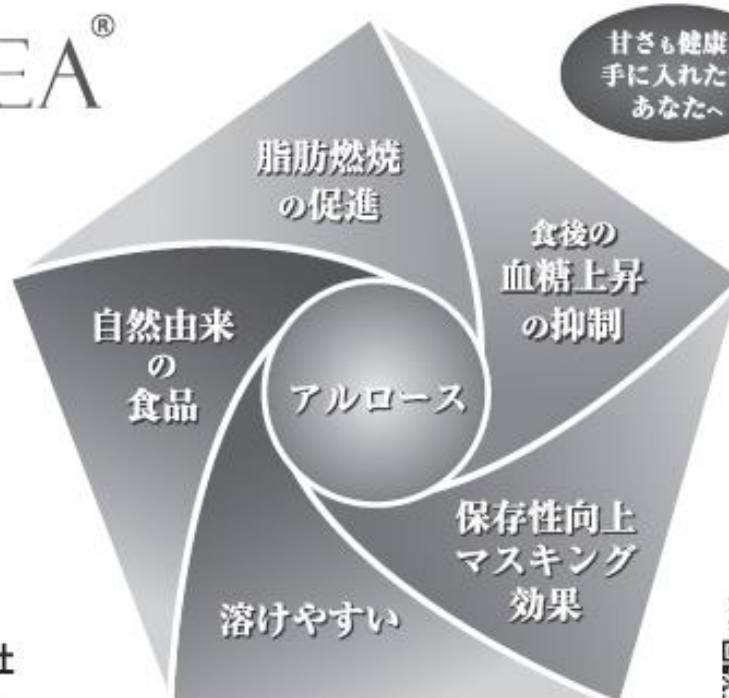
TAKAMATSU TEISAN



ASTRAEA®

— アストレア —

アストレアとは
アルロースという
カロリーゼロの
希少糖の一種です。



でん粉の総合メーカー

松谷化学工業株式会社

本社・工場 〒664-8508 兵庫県伊丹市北伊丹5丁目3番地
TEL (072) 771-2010 (営業) FAX 072-771-7455

アストレア
公式サイト



An Essential provider A Quiet Innovator

無冠のナンバーワン・無名のオンリーワン

消炎鎮痛パップ剤で長年培った
「経皮吸収技術の応用」と
「人類の痛みからの解放」をスローガンに
外用剤の総合医薬品メーカーとして
世界に冠たる会社をめざしてまいります



帝國製薬株式会社

本社：香川県東かがわ市三本松567番地 事業所：東京・大阪 工場：香川・徳島
<https://www.teikoku.co.jp>

<帝國製薬グループ>

Teikoku Pharma USA, Inc. / 扶桑帝薬（青島）有限公司 /
テイコクファルマケア株式会社 / 帝國漢方製薬株式会社 / 扶桑化学工業株式会社
株式会社セレンファーマ