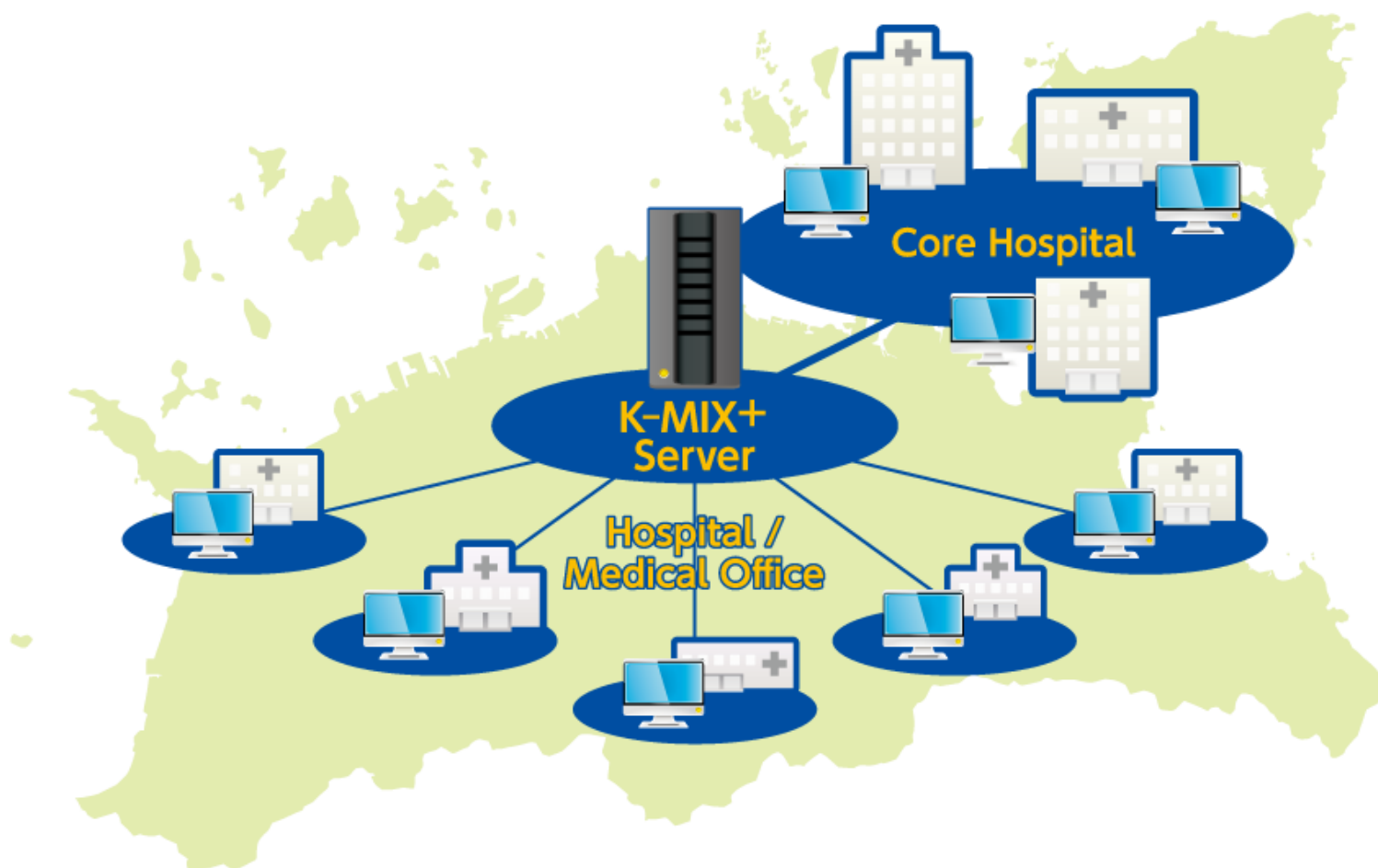


かがわ医療情報ネットワーク



K-MIX+ is abbreviation for Kagawa Medical Information eXchange plus. **K-MIX+** was built to be able to help the treatment of the patient by exchanging the medical treatment information such as the medical records of the patient between hospitals.



K-MIX+ is

K-MIX+ is the whole country's first nationwide Medical Information Network.

K-MIX+ is a network mainly on the images, telediagnosis and consultation. **K-MIX+** exchanges the information of the patient of the core hospital between hospitals in conventional **K-MIX** and is the thing which added a function to make use of to treatment.

By these

- Introduction, promotion of the smooth cooperation through the reverse introduction
- An allergy and contraindicated information sharing
- Controls overlap enforcement such as the inspection and the overlap dosage of the drug
- Continue the explanation to a patient, learn the latest medical act

K-MIX+ realizes the above and can plan improvement of the quality of the overall medical treatment

Screen Images

Whom?

Whose?

What kind of information?

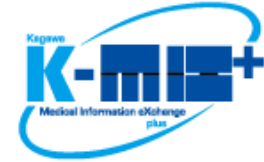
Which range of information?

Whom?

The screenshots display various components of the K-MIX+ system:

- Top Left:** Patient registration form for a 67-year-old male patient, including fields for name, sex, date of birth, and hospital ID.
- Top Right:** A calendar view showing dates from 2007 to 2008, with icons representing different types of medical events.
- Bottom Left:** A table of laboratory test results with columns for test name, result, and reference range. The table includes various blood chemistry and hematology tests.
- Bottom Right:** Two axial CT scan images of the chest, showing the lungs and heart. Technical details like slice thickness (2.500000mm) and window settings (WL: 40, WW: 400) are visible.

The name which merged two networks = Kagawa Medical Information eXchange plus




**Kagawa Core Hospital
Medical Information
Network**
Medical Emergency Center, Hospital take the turn in rotation

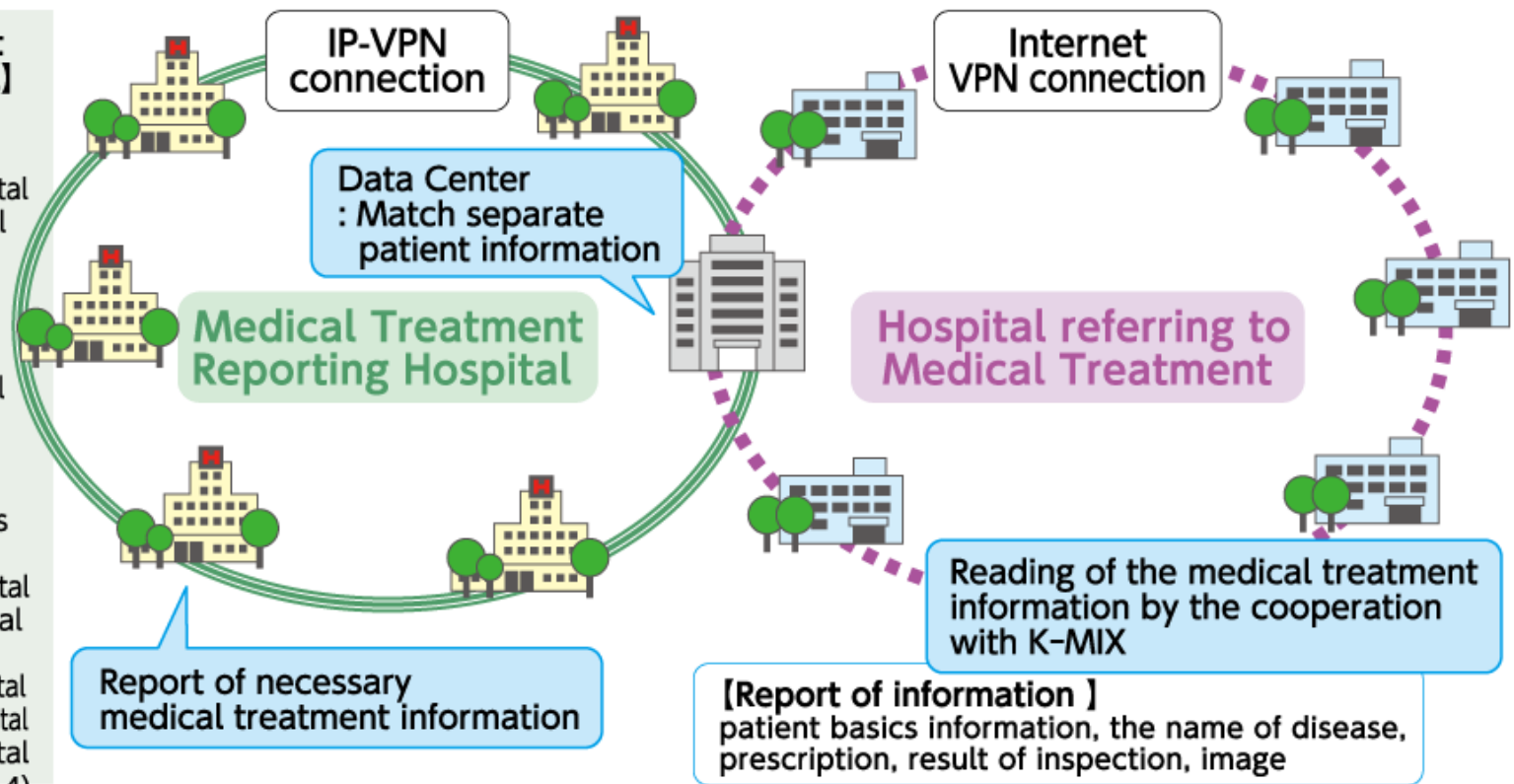


**Kagawa Telediagnosis
Medical Network
(K-MIX)**
Hospital, Medical Office

**[Medical Treatment
Reporting Hospital]**

- Kagawa Prefectural Shirotori Hospital
- Sanuki Municipal Hospital
- KagawaSaiseikai Hospital
- Kagawa Prefectural Center Hospital
- Kagawa University Hospital
- KKR Takamatsu Hospital
- Ritsurin Hospital
- Takamatsu Municipal Hospital
- Takamatsu Red Cross Hospital
- Yashima General Hospital
- Kagawa Rosai Hospital
- Kaisei Hospital
- Sakaide Municipal Hospital
- Takinomiya General Hospital
- Mitoyo General Hospital

(2014)



Report of necessary medical treatment information

[Report of information]
patient basics information, the name of disease, prescription, result of inspection, image

The characteristic of K-MIX+

- Medical treatment information is shown by 15 core Hospital in Kagawa
- The information cooperation is carried out between a medical office or core hospitals from a core hospital
- The reference facilities are limited to K-MIX use facilities
- Network connection by VPN in conformity with the guidelines on country is necessary to refer to medical treatment information, and environmental facilities of that purpose are necessary
- The button of the medical information network is displayed by K-MIX screen after the login and can refer to the medical treatment information in Single Sign-On
- When you require a report of the medical treatment information of a patient, it is necessary to take the informed consent to a patient

There are the following merits

for Patient

- The family medicine can keep medical treatment contents performed at a core hospital under control exactly
- The family medicine does not have to do inspection and the same explanation to repeat
- The family medicine can give safe medical care by sharing allergic information and anamnesis
- The family medicine can evade prescription to repeat
- By the core hospital of the specialist and cooperation of the family medicine, the risks that illness becomes severe decrease
- The burdens of medical expenses decrease by evading overlap and the aggravation of the medical treatment act of the patient

for Medical Treatment Reporting Hospital

(Core Hospital)

- By introducing a patient to family medicine at the time of a discharge immediately, Shortening of the days of the hospitalization, operation volume, efficiency of the bed use become higher
- As for the doctor of the core hospital, load of the making of the medical treatment reporting book to family medicine decreases by disclosure of the medical record
- The patient feels relieved by entrusting family medicine with a treatment regimen at the time of a discharge
- Improvement of the medical quality is expected by listing a medical record on a premise to disclose a medical record
- An introduction rate improves by a core hospital and cooperation with the family medicine being activated
- A function is assigned every medical institution by activation of the cooperation of the hospital, and efficiency of the health resource is realized
- The statistical analysis of the introduction patient is possible

for Hospital referring to information

(Hospital / Medical Office)

- The doctor of the medical office can confirm an episode of care immediately at a medical office by referring to a core hospital
- The doctor of the medical office can grasp the medical treatment information that a patient received at a core hospital exactly
- The doctor of the medical office becomes easy to do acceptance preparations in the exchanges of the letter of introduction by being able to grasp the background information of the patient who is hard to know it
- The doctor of the medical office can give medical care by comparing the image photographed at a medical office with the image photographed at a core hospital
- The doctor of the medical office can explain a state of a patient and a future treatment policy while showing a family the treatment regimen at the core hospital
- The doctor of the medical office cooperates with the specialist of the core hospital by sharing patient information, and a patient can receive treatment

Use example of K-MIX+

at Medical Office When a patient introduced to in K-MIX+ came for a medical examination again...

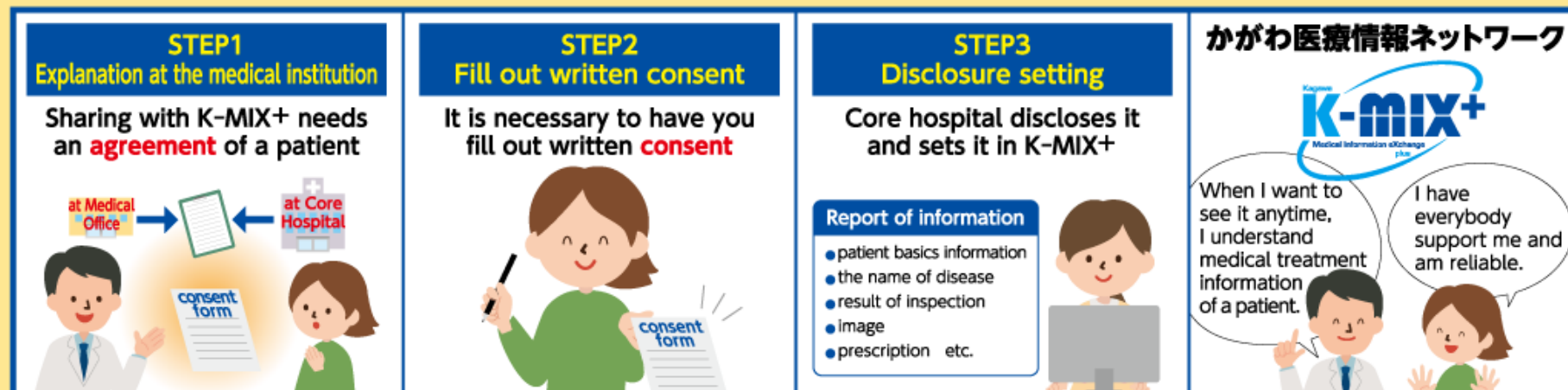
<p>Patient A</p> <p>What kind of treatment did you receive at ○○ hospital?</p> <p>I don't remember so much.</p>	<p>Well, let's see your medical record of ○○ hospital by using K-MIX+.</p> <p>Could you agree with this Consent?</p> <p>consent form</p>	<p>and...</p> <p>After referred the patient's medical record</p> <p>It was such medical treatment contents.</p> <p>The inspection is not necessary today. Let's make one medicine by addition.</p> <p>Oh, good!</p>	<p>Appropriate medical care to a patient</p> <p>K-MIX+ brings many judgment materials.</p>
--	--	---	---

+ at Core Hospital Accept the patient after the discharge

<p>In the case of Patient B who was urgently conveyed, and had an operation at ○○ hospital</p> <p>Though I succeeded for an operation, this hospital is far from the home, and what should I do after a discharge?</p>	<p>Don't worry. Because the medical office near the home participates in K-MIX+, I can inform a treatment regimen of you in detail.</p> <p>Will you agree?</p> <p>Yes, I agree.</p> <p>consent form</p>	<p>at Medical Office</p> <p>At the introduced hospital</p> <p>Thank you very much for you.</p> <p>I will do it this way in future.</p> <p>I understood the treatment regimen at ○○ hospital.</p>	<p>Being reliable after a discharge</p> <p>I can be relieved that treatment is received near with convenience.</p> <p>A patient can be treated smoothly by using K-MIX+</p>
---	---	--	--

The method to disclose medical treatment information.

The medical treatment information sharing with K-MIX+ needs an agreement of a patient



※The patient withdraws an agreement by submitting documents and can cancel disclosure of the information on the way.
(The presentation such as the documents which can identify the person may be necessary)

Main procedure of the agreement acquisition

The agreement acquisition at the reporting hospital

〈At the time of the patient introductions with the discharge〉

- ① The doctor performs explanation referring to medical treatment information to a patient and obtains the written consent of the patient
- ② The system manager performs the disclosure setting of the patient at a medical treatment reporting hospital
- ③ The doctor can refer to the medical treatment content of the patient in reference facilities

※The written consent copies 1 copies. One copy to a patient, keeps the original at a reporting hospital.

The agreement acquisition in reference facilities

- ① The doctor performs explanation referring to medical treatment information to a patient and obtains the written consent of the patient
- ② The doctor sends written consent to the reporting hospital by fax
- ③ The system manager performs the disclosure setting of the patient at a medical treatment reporting hospital
- ④ The doctor can refer to the medical treatment content of the patient in reference facilities
- ⑤ It is necessary for the doctor to mail the original of the written consent to a reporting hospital later

※When a doctor refers between reporting hospitals, it becomes similar flow.

※The written consent copies 2 copies. One copy to a patient, one copy to reference facilities and mail the original to a reporting hospital.