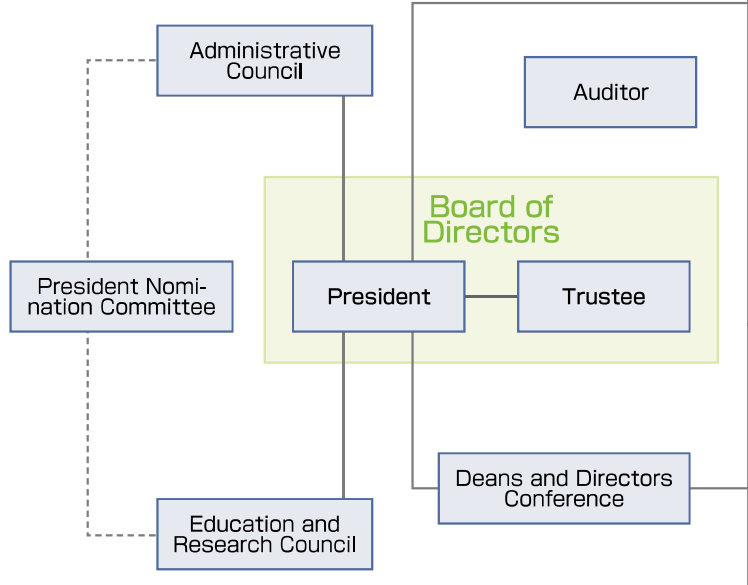


Organization

- History
- Organization**
- Administrative Officials
- Number of Faculty and Staff Members
- Faculties and Graduate Schools
- Number of Students
- Applicants and Enrollments
- Employment Situation of Graduates
- The Number of Scholarship Students
- Facilities
- International Affairs
- Extension Courses
- Budget Plan
- Research Partnership
- University Hospital
- Affiliated Teaching Hospital
- Institutes
- Campus



Faculties

- Faculty of Education
- Faculty of Law
- Faculty of Economics
- Faculty of Medicine
- Faculty of Engineering
- Faculty of Agriculture

Graduate Schools

- Graduate School of Education
- Graduate School of Law
- Graduate School of Economics
- Graduate School of Medicine
- Graduate School of Engineering
- Graduate School of Agriculture
- Graduate School of Management
- Kagawa-Ehime Universities' Graduate School of Law
- United Graduate School of Agricultural Sciences, Ehime University

Institute of Education and Student Support

- Center for Research and Educational Development in Higher Education
- Admission Center
- Career Support Center
- Education and Research Center for Lifelong Learning
- International Student Center

Institute of Research Promotion

- Research Planning Center
- Life Science Research Center
- Rare Sugar Research Center
- Nano-Micro Structure Device Integrated Research Center
- Seto Inland Sea Regional Research Center

Institute of Library and Information Technology

- Library
- Museum
- Information Technology Center

Institute of Research Partnership

- Center for Social Collaboration and Intellectual Property
- Crisis and Security Management Research Center

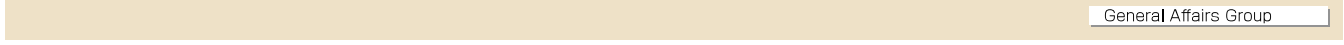
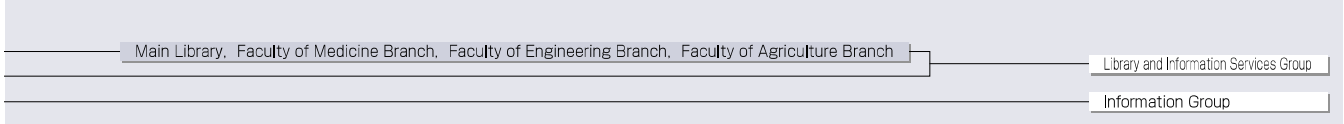
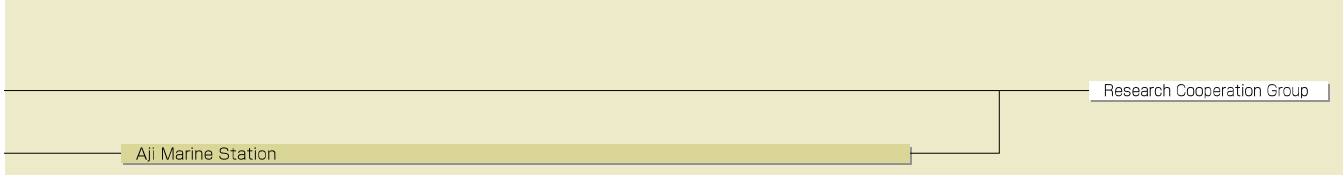
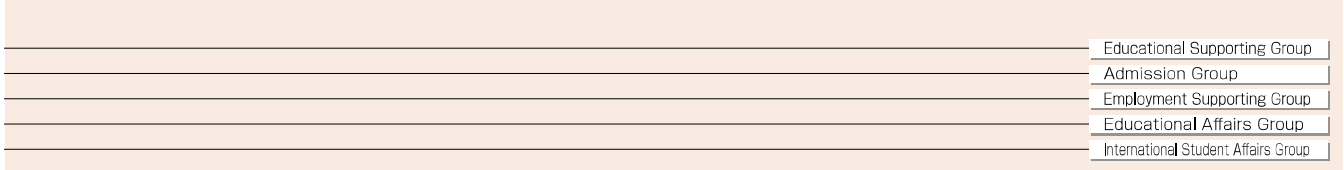
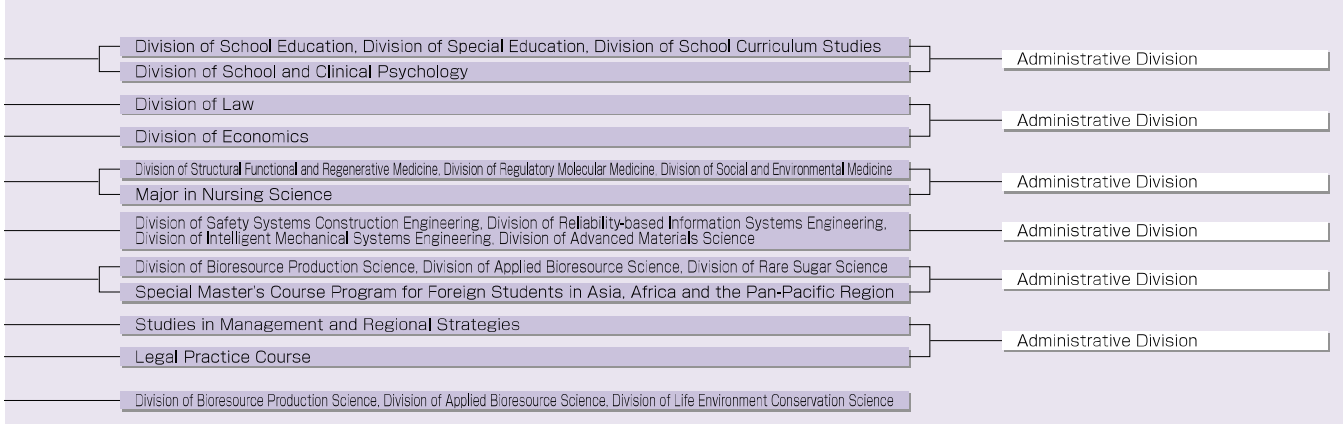
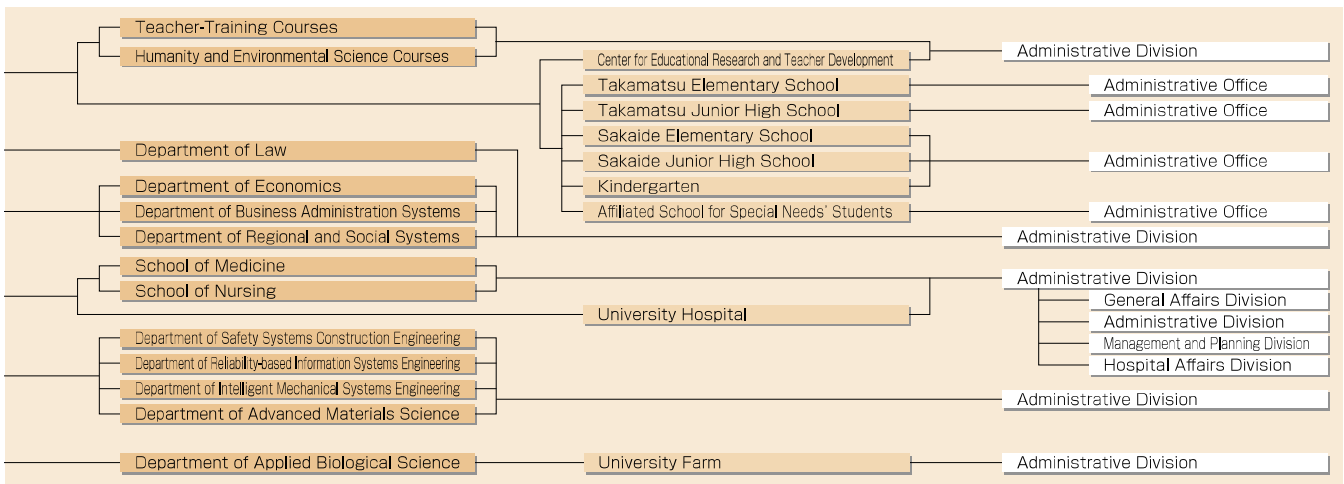
Health Center

Public Relations Center

Administrative Offices

- Management Offices
 - General Affairs Group
 - Personnel Affairs Group
 - Salary and Welfare Group
 - Business Improvement Group

Audit Office



- History
- Organization
- Administrative Officials
- Number of Faculty and Staff Members
- Facilities and Graduate Schools
- Number of Students
- Applicants and Enrollments
- Employment Situation of Graduates
- The Number of Scholarship Students
- Facilities
- International Affairs
- Extension Courses
- Budget Plan
- Research Partnership
- University Hospital
- Affiliated Teaching Hospital
- Institutes
- Campus