

University Hospital

As of 2014

■ Establishment

April 1, 1983

■ Total Building Area

58,554m²

■ Open

October 20, 1983

■ Beds

Authorized beds 613beds



Facilities

Clinical Departments

- Department of Endocrinology and Metabolism
- Hematology
- Rheumatology
- Respiratory Medicine
- Department of Cardiology
- Nephrology
- Division of Anti-aging and Vascular Medicine
- Department of Gastroenterology
- Department of Neurology
- General Internal Medicine
- Dermatology
- Neuropsychiatry
- Pediatrics
- Department of Maternal Fetal Medicine and Women's Health
- Cardiovascular Surgery
- Gastrointestinal Surgery
- General Thoracic surgery
- Department of Breast and Endocrinological surgery
- Pediatric Surgery
- Orthopedics Surgery
- Plastic and Reconstructive Surgery
- Department of Urology, Adrenal Surgery and Renal transplantation
- Neurological Surgery
- Ophthalmology
- Department of Otolaryngology-Head and Neck Surgery
- Diagnostic Radiology
- Radiation Oncology
- Anesthesiology and Pain Clinic
- Department of Diagnostic Pathology
- Oral and Maxilla-facial Surgery

Central Clinical Facilities

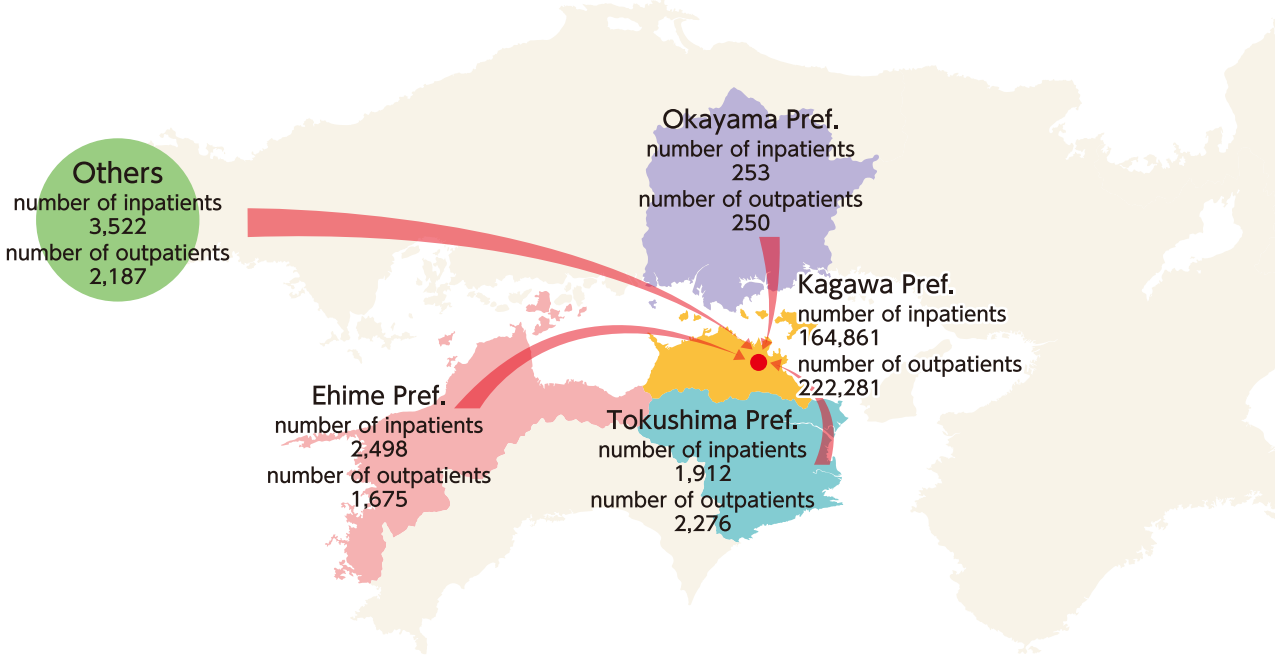
- Clinical Laboratory
- Clinical Radiology
- Surgical Center
- Supply Center

Special Therapeutic Facilities

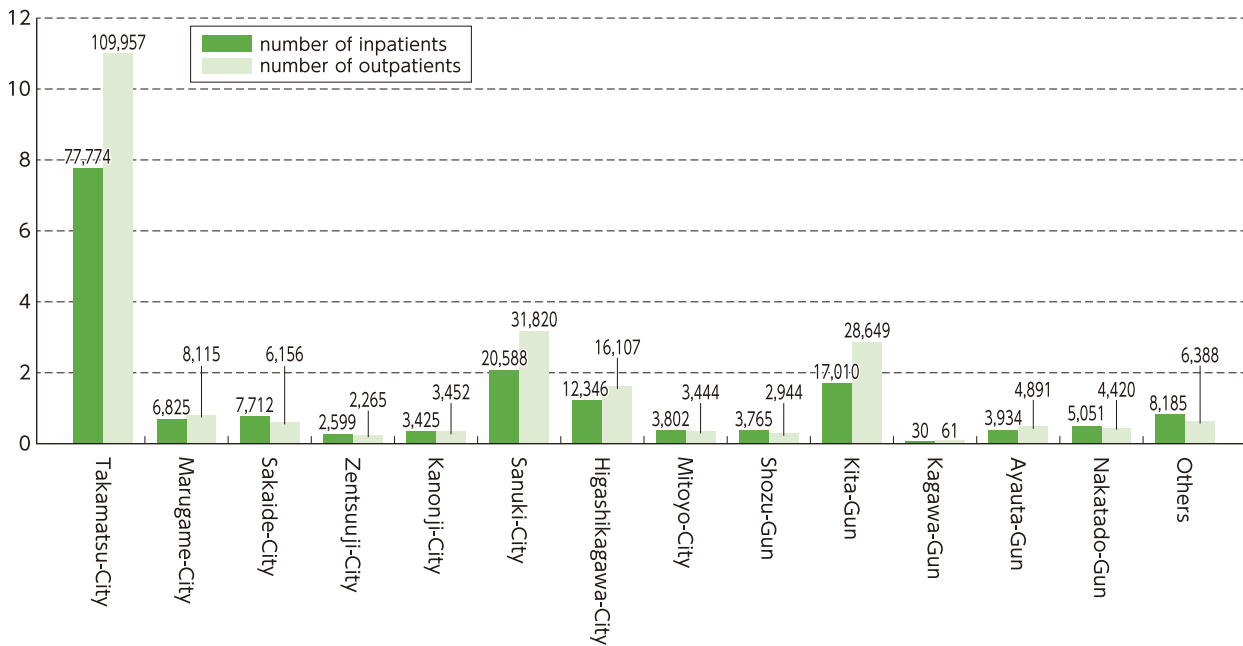
- Emergency Medical Center
- Intensive Care Unit
- Transfusion Medicine
- Diagnostic Pathology
- Medical Informatics
- Synthesis Perinatal Period Mother and Child Medical Treatment Center
- Department of Rehabilitation
- Division of Dialysis and Apheresis
- Department of Endoscopy
- Oncology Center
- Child and Family Psychiatric Guidance Clinic
- Division of Women's Health Care
- Higher Brain Dysfunction Clinic
- Clinical Genetics Unit
- Stroke Unit
- Diabetes Center
- Cardiovascular Center
- Medical Engineering Equipment Management Center

- Medical Record & Information Administration
- Clinical Trials Management Center
- Infection Control Team
- Medical Security and Safety Management Section
- Division of Outpatient Chemotherapy
- Regional Outreach Office
- Department of Clinical Education and Training Support
 - ◆ Post Graduate Clinical Education Center
 - ◆ Support Center for Community Health Professions
 - ◆ Clinical Education Training Management Room
- Work-Life Balance Support Section
- Advanced Medical Research Center
- Department of Pharmacy
- Department of Nursing
- Division of Clinical Nutrition

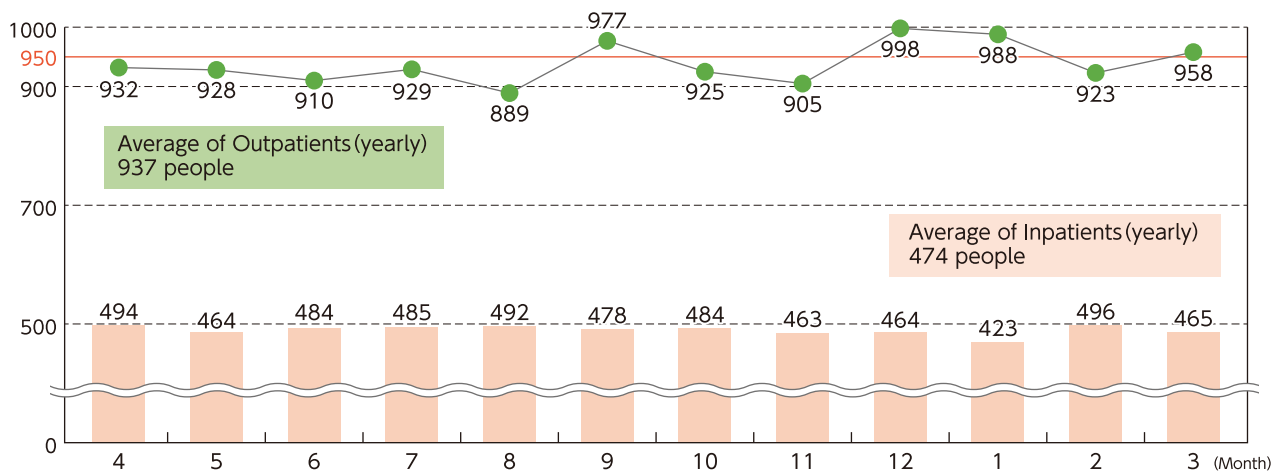
Distribution of Outpatients by Prefecture



Regional Distribution of inpatients and Outpatients



Average Daily Number of Inpatients and Outpatients



Number of Emergency Cases

Outpatients	Inpatients	Total
2,183	1,689	3,872

Number of Deliveries

Normal		Abnormal		Total
Mature	Immature	Mature	Immature	
347	53	117	75	592

Number of Operations

Rate Classification	0~4,999 points	5,000~19,999 points	above 20,000 points	Total
Number	1,496	2,966	3,741	8,203

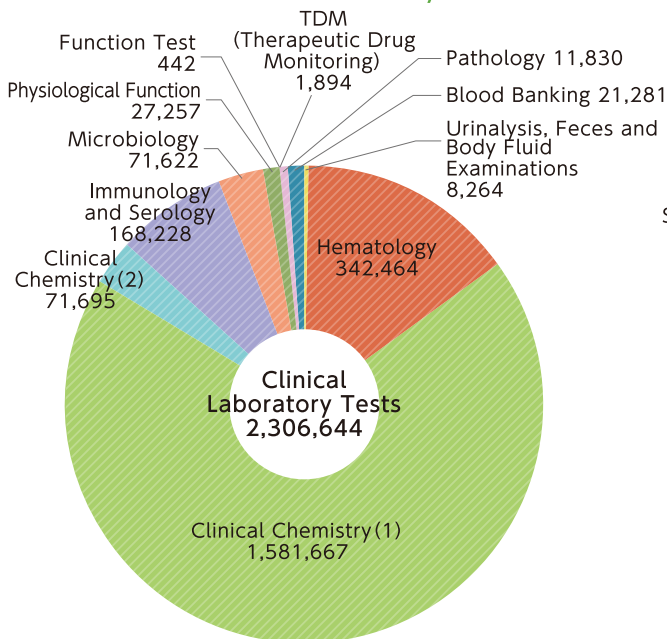
Number of Prescription, TPN Aseptic Preparation, etc.

Classification	Prescription	TPN Aseptic Preparation	Medication Management and Consultation	Drug Information Service for Outpatients
Number	104,839	2,198	6,529	8,761
	Outpatients 9,569			
	Inpatients 95,270			

Number of Patients

Clinocal Medicine	Beds	Inpatients		Outpatients	
		Total	Per Day	Total	Per Day
Department of Internal Medicine Division of Endocrinology and Metabolism, Hematology, Rheumatology and Respiratory Medicine	49	14,830	40.6	23,103	94.7
Department of Cardiorenal and Cerebrovascular Medicine	40	11,200	30.7	12,791	52.4
Department of Gastroenterology and Neurology	51	14,818	40.6	21,189	86.8
Integrated Medicine	12	2,975	8.2	6,328	25.9
Dermatology	12	3,226	8.8	11,228	46.0
Neuropsychiatry	26	6,065	16.6	12,757	52.3
Pediatrics	30	10,221	28.0	12,274	50.3
Department of Maternal Fetal Medicine and Women's Health	55	18,979	52.0	13,832	56.7
Cardiovascular Surgery	9	3,925	10.8	758	3.1
Gastrointestinal Surgery	38	11,114	30.4	5,257	21.5
General Thoracic Surgery Breast and Endocrinological surgery	41	10,750	29.5	10,220	41.9
Pediatric Surgery	10	1,696	4.6	2,387	9.8
Orthopedics Surgery	51	16,822	46.1	17,822	73.0
Plastic and Reconstructive Surgery	13	3,581	9.8	5,269	21.6
Department of Urology, Adrenal Surgery and Renal Transplantation	24	6,706	18.4	11,047	45.3
Neurological Surgery	24	8,912	24.4	6,005	24.6
Ophthalmology	32	10,111	27.7	23,195	95.1
Department of Otolaryngology-Head and Neck Surgery	20	7,096	19.4	12,343	50.6
Diagnostic Radiology	3	46	0.1	332	1.4
Radiation Oncology	0	—	—	6,210	25.5
Anesthesiology and Pain Clinic	2	36	0.1	2,737	11.2
Emergency Medical Center	20	6,312	17.3	850	3.5
Oral and Maxilla-Facial Surgery	10	3,625	9.9	10,735	44.0
Common	41	—	—	—	—
Total	613	173,046	474.1	228,669	937.2

Number of Clinical Laboratory Tests



Patients of Radiological Examinations

