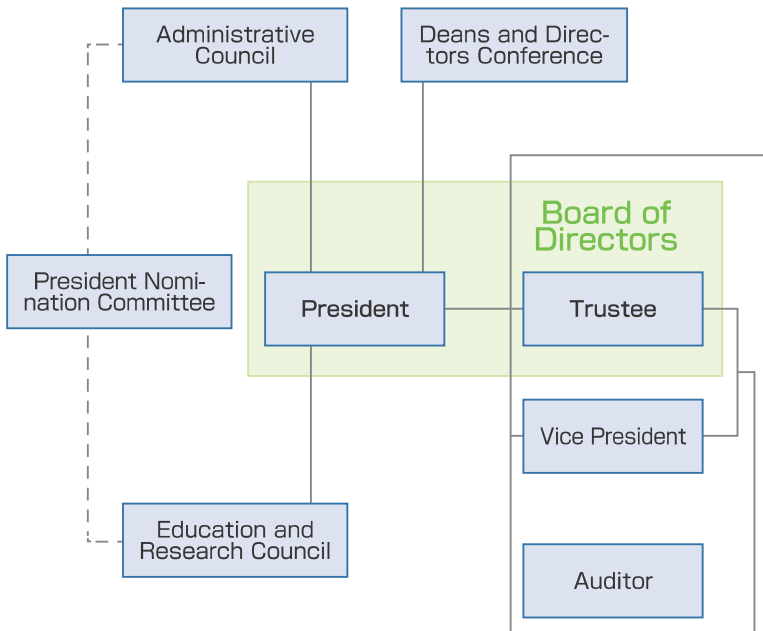


Organization

- History
- Organization
- Administrative Officials
- Number of Faculty and Staff Members
- Faculties and Graduate Schools
- Number of Students
- Applicants and Enrollments
- Employment Situation of Graduates
- The Number of Scholarship Students
- Facilities
- International Affairs
- Extension Courses
- Budget Plan
- Research Partnership
- University Hospital
- Affiliated Teaching Hospital
- Institutes
- Campus



- ### Faculties
- Faculty of Education
 - Faculty of Law
 - Faculty of Economics
 - Faculty of Medicine
 - Faculty of Engineering
 - Faculty of Agriculture

- ### Graduate Schools
- Graduate School of Education
 - Graduate School of Law
 - Graduate School of Economics
 - Graduate School of Medicine
 - Graduate School of Engineering
 - Graduate School of Agriculture
 - Graduate School of Management
 - Kagawa-Ehime Universities' Graduate School of Law
 - United Graduate School of Agricultural Sciences, Ehime University

- ### Institute of Education and Student Support
- Center for Research and Educational Development in Higher Education
 - Admission Center
 - Career Support Center
 - Education and Research Center for Lifelong Learning

- ### Institute of Research Promotion
- Research Planning Center
 - Life Science Research Center
 - Rare Sugar Research Center
 - Nano-Micro Structure Device Integrated Research Center
 - Seto Inland Sea Regional Research Center

- ### Institute of Library and Information Technology
- Library
 - Museum
 - Information Technology Center

- ### Institute of Research Partnership
- Center for Social Collaboration and Intellectual Property
 - Crisis and Security Management Research Center

- ### International office
- Center for International Research and Cooperation
 - International Student Center

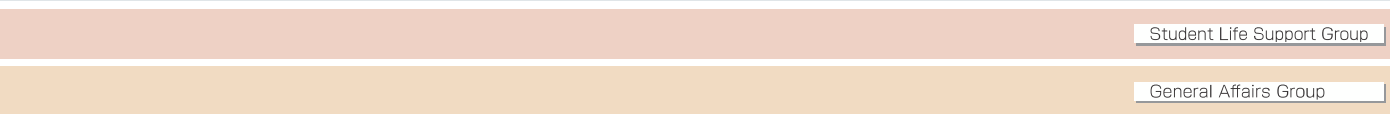
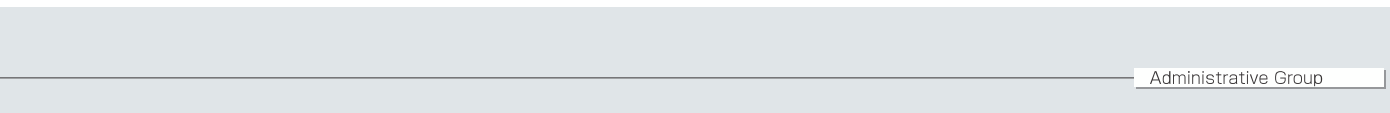
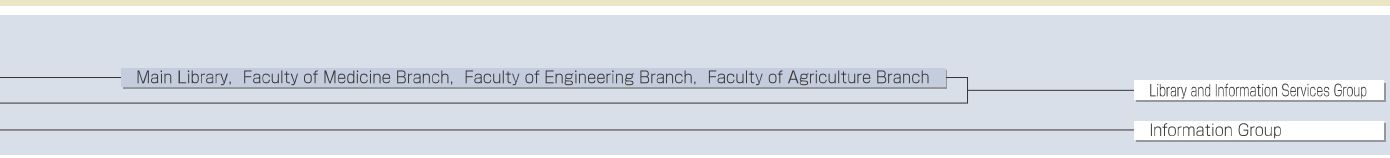
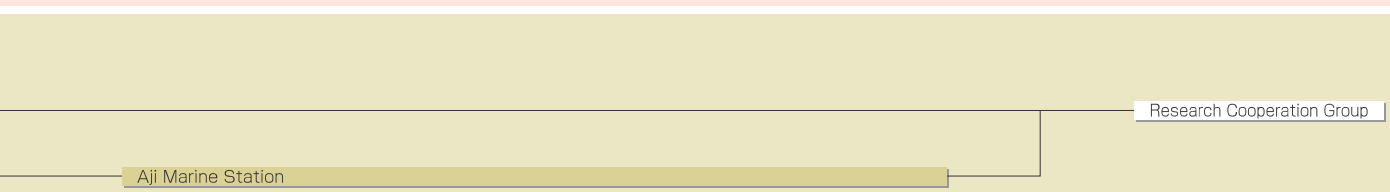
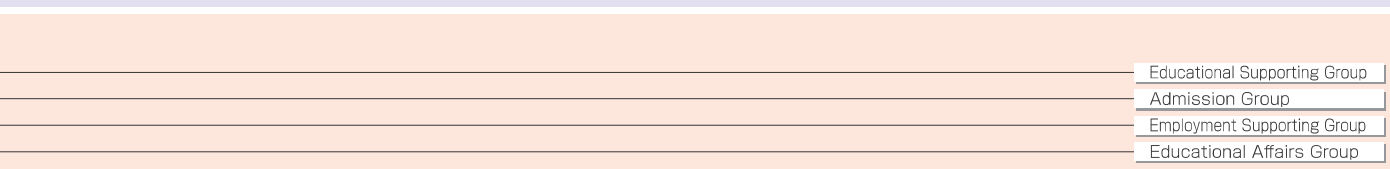
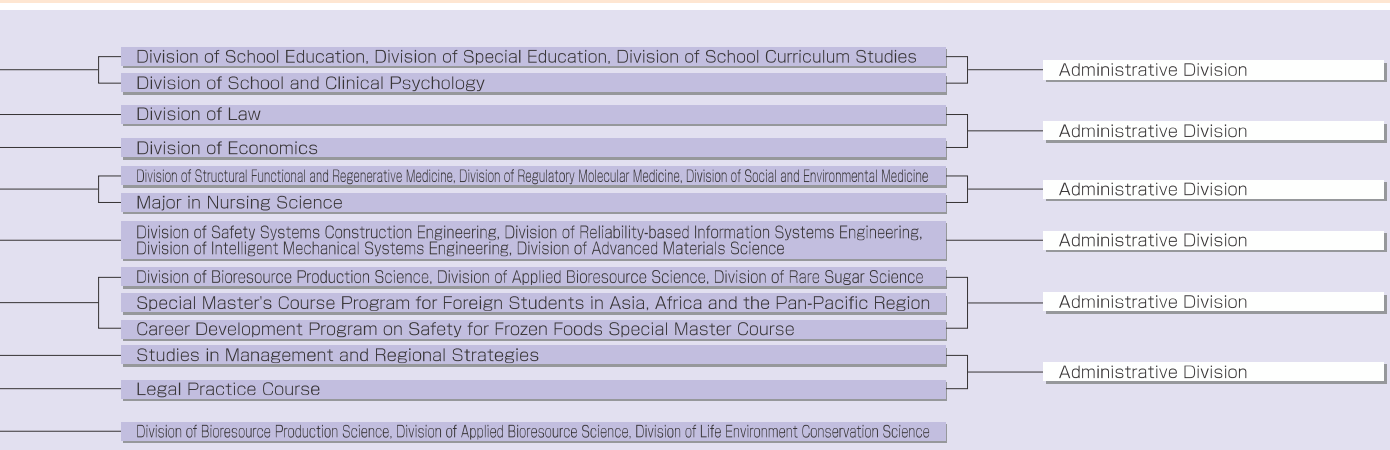
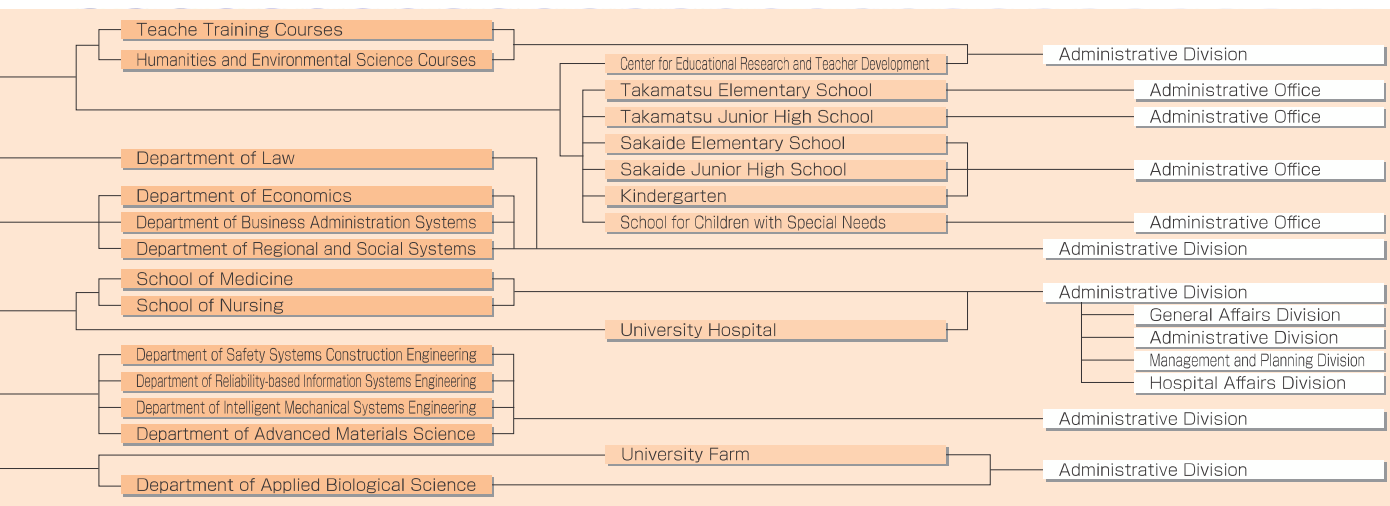
- ### Health Center

- ### Public Relations Center

- ### Administrative Offices
- Educational and Student Supporting Offices
 - Educational Affairs Group
 - Admission Group
 - Educational Supporting Group
 - Employment Supporting Group
 - Student Life Support Group

- ### General Planning Office

- ### Audit Office



History

Organization

Administrative Officials

Number of Faculty and Staff Members

Faculties and Graduate Schools

Number of Students

Applicants and Enrollments

Employment Situation of Graduates

The Number of Scholarship Students

Facilities

International Affairs

Extension Courses

Budget Plan

Research Partnership

University Hospital

Affiliated Teaching Hospital

Institutes

Campus