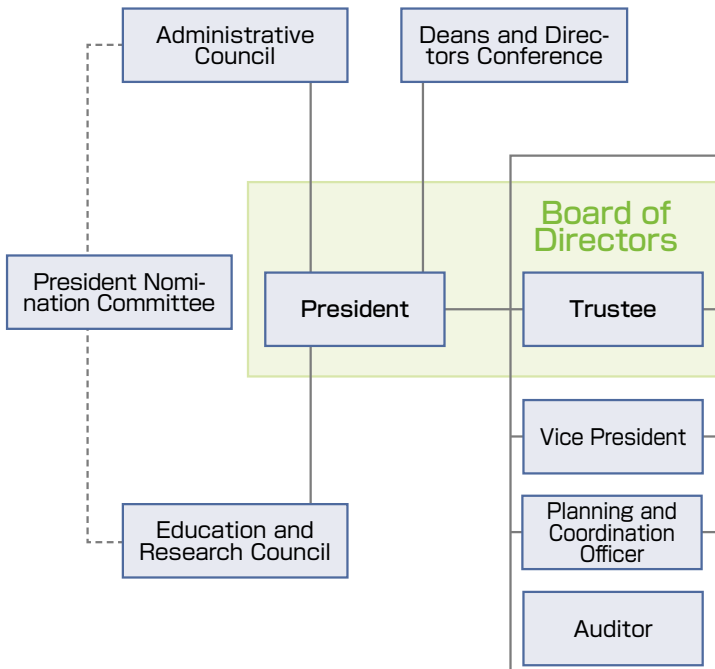


Organization

- History
- Organization
- Administrative Officials
- Number of Faculty and Staff Members
- Faculties and Graduate Schools
- Number of Students
- Credit Agreements Established Between Kagawa University and Other Universities
- Applicants and Enrollments
- Employment Situation of Graduates
- The Number of Scholarship Students
- Facilities
- Extension Courses
- International Affairs
- Budget Plan
- Research Partnership
- University Hospital
- Institutes
- Campus



- ### Faculties
- Faculty of Education
 - Faculty of Law
 - Faculty of Economics
 - Faculty of Medicine
 - Faculty of Engineering
 - Faculty of Agriculture

- ### Graduate Schools
- Graduate School of Education
 - Graduate School of Law
 - Graduate School of Economics
 - Graduate School of Medicine
 - Graduate School of Engineering
 - Graduate School of Agriculture
 - Graduate School of Management
 - Kagawa-Ehime Universities' Graduate School of Law
 - United Graduate School of Agricultural Sciences, Ehime University

- ### Institute of Education and Student Support
- Center for Research and Educational Development in Higher Education
 - Admission Center
 - Career Support Center
 - Education and Research Center for Lifelong Learning

- ### Institute of Research Promotion
- Research Planning Center
 - Life Science Research Center
 - Rare Sugar Research Center
 - Nano-Micro Structure Device Integrated Research Center
 - Seto Inland Sea Regional Research Center

- ### Institute of Library and Information Technology
- Library
 - Museum
 - Information Technology Center

- ### Institute of Research Partnership
- Center for Social Collaboration and Intellectual Property
 - Crisis and Security Management Research Center

- ### International Office
- Center for International Research and Cooperation
 - International Student Center

- ### Health Center

- ### Public Relations Center

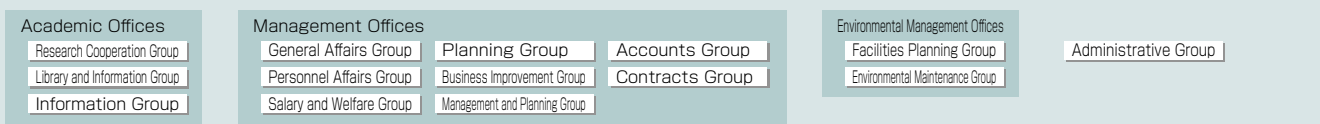
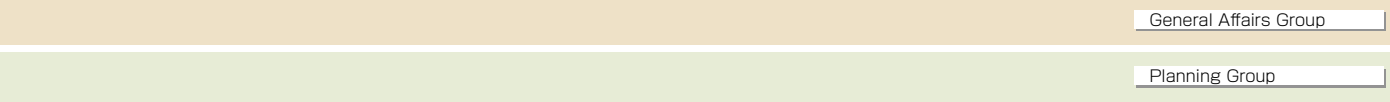
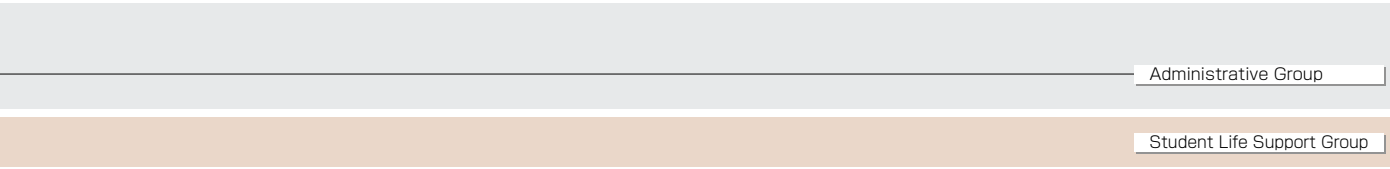
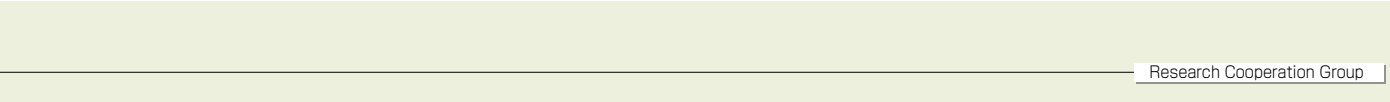
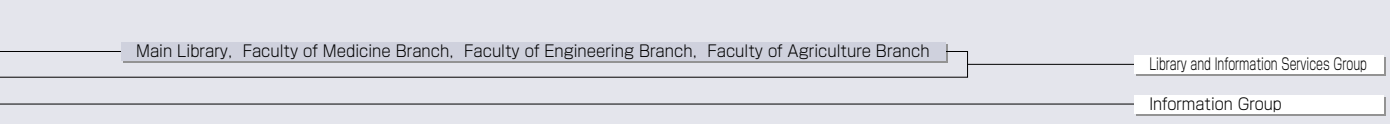
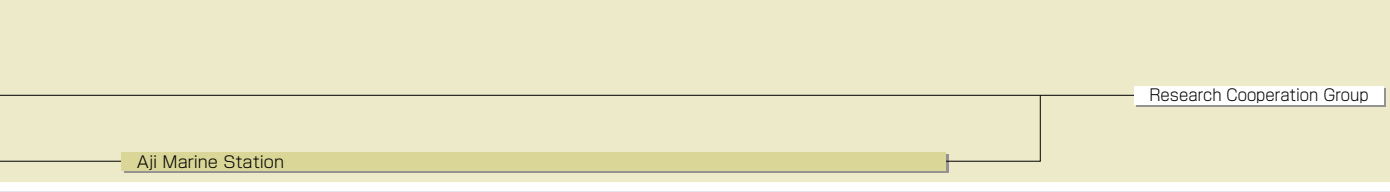
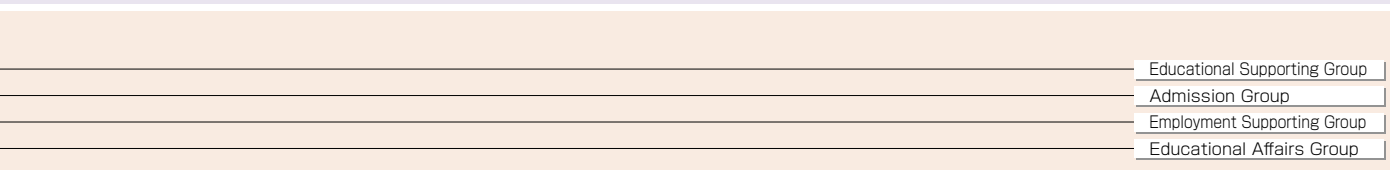
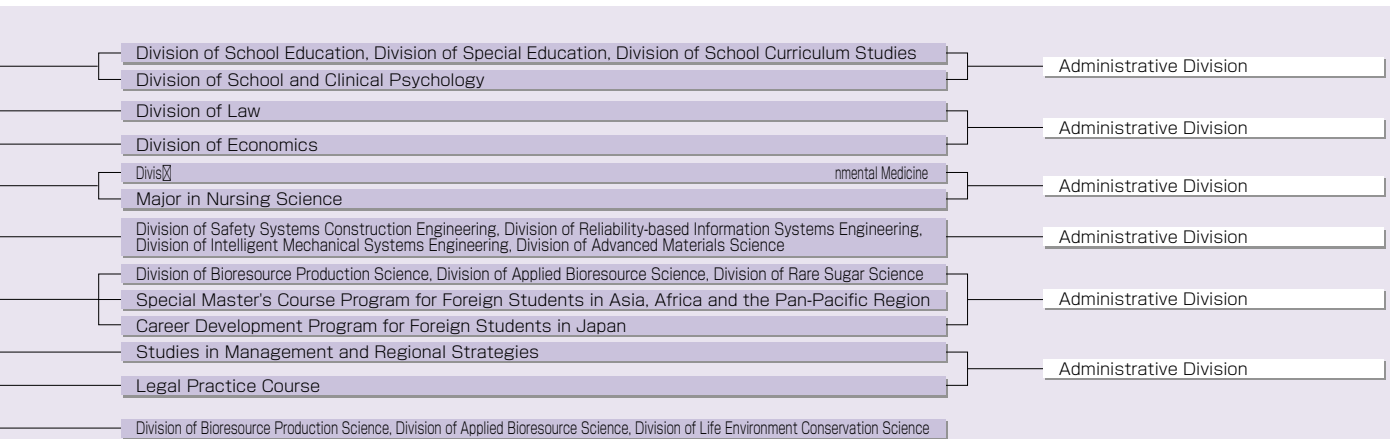
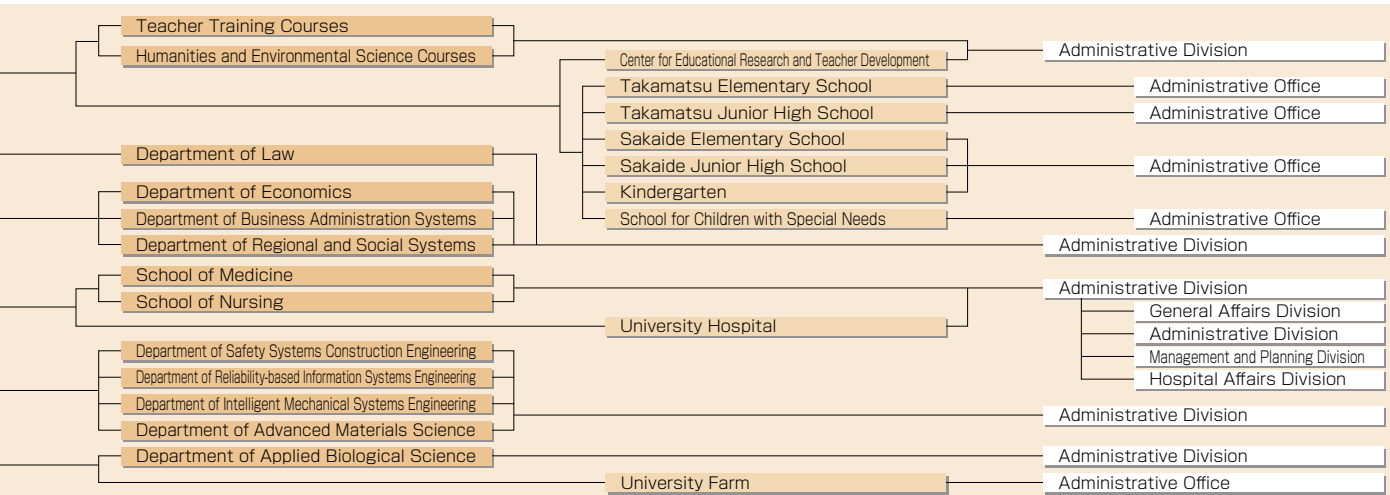
- ### University Evaluation Office

- ### Administrative Offices
- | | |
|--|----------------------------------|
| Educational and Student Supporting Offices | |
| Educational Affairs Group | Admission Group |
| Educational Supporting Group | Employment Supporting Group |
| Student Life Support Group | Teacher's License Renewal Office |

- ### General Planning Office

- ### Audit Office

- ### Gender Equality Promotion Office



History

Organization

Administrative Officials

Number of Faculty and Staff Members

Facilities and Graduate Schools

Number of Students

Credit Agreements Established Between Kagawa University and Other Universities

Applicants and Enrollments

Employment Situation of Graduates

The Number of Scholarship Students

Facilities

Extension Courses

International Affairs

Budget Plan

Research Partnership

University Hospital

Institutes

Campus